

## Akt2 (Ab-474) Antibody

**Cat. #:** ANTY021155

**Species:** Human, Mouse and Rat

**Quantity:** 100ug

**Concentration:** 100ug/100ul

**Storage and Stability:**

Store at -20°C/1 year

**Immunogen:**

The antiserum was produced against synthesized non-phosphopeptide derived from human Akt2 around the phosphorylation site of serine 474 (Q-F-SP-Y-S).

**Specificity:**

Akt2 (Ab-474) antibody detects endogenous levels of total Akt2 protein.

**Tested Application:** WB and IHC

**Application Notes:** Rabbit IgG in phosphate buffered saline (without Mg<sup>2+</sup> and Ca<sup>2+</sup>), pH 7.4, 150mM NaCl, 0.02% sodium azide and 50% glycerol.

**Raised In:** Rabbit

**Purity:** The antibody was affinity-purified from rabbit antiserum by affinity-chromatography using epitope-specific immunogen.

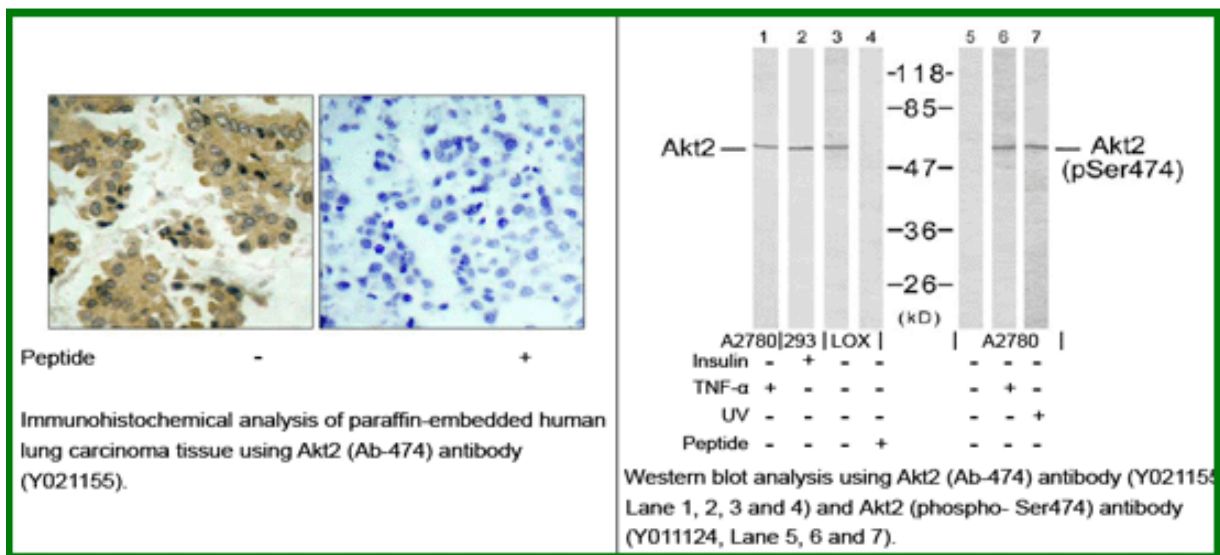
**Storage buffer:** WB: 1:500~1:1000 IHC: 1:50~1:100

**Form:** Liquid

**Reference:**

Sun M, et al. (2001) Cancer Res; 61(16): 5985-91. Yuan ZQ, et al. (2000) Oncogene; 19(19): 2324-30.

Meier R, et al. (1997) J Biol Chem; 272(48): 30491-7.



**For research use only**

Antagene, Inc. Toll Free: 1-866-964-2589, Fax: 1-888-225-1868, [info@antageneinc.com](mailto:info@antageneinc.com),  
[www.antageneinc.com](http://www.antageneinc.com)