

cdc25C (Ab16) Antibody

Cat. #: ANTY021145

Species: Human

Quantity: 100ug

Concentration: 100ug/100ul

Storage and Stability:

Store at -20°C/1 year

Immunogen:

The antiserum was produced against synthesized non-phosphopeptide derived from human cdc25C around the phosphorylation site of serine 216 (S-P-SP-M-P).

Specificity:

cdc25C (Ab-216) antibody detects endogenous levels of total cdc25C protein.

Tested Application: IHC

Application Notes: Rabbit IgG in phosphate buffered saline (without Mg²⁺ and Ca²⁺), pH 7.4, 150mM NaCl, 0.02% sodium azide and 50% glycerol.

Raised In: Rabbit

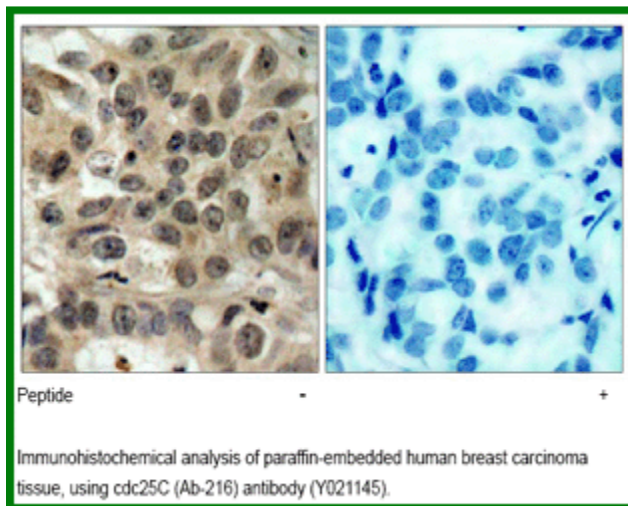
Purity: The antibody was affinity-purified from rabbit antiserum by affinity-chromatography using epitope-specific immunogen.

Storage buffer: IHC: 1:50~1:100

Form: Liquid

Reference:

Toyoshima-Morimoto F. et al. (2002) EMBO Rep. 3(4): 341-348. Ferguson AM. et al. (2005) Mol Cell Biol. 25(7): 2853-2860. Donzelli M. et al. (2003) EMBO Rep. 4(7): 671-677. Chen F. et al. (2002) Proc Natl Acad Sci U S A. 99(4): 1990-1995.



For research use only

Antagene, Inc. Toll Free: 1-866-964-2589, Fax: 1-888-225-1868, info@antageneinc.com,
www.antageneinc.com