

### G3BP-1 (Ab-232) Antibody

**Cat. #:** ANTY021102

**Species:** Human

**Quantity:** 100ug

**Concentration:** 100ug/100ul

**Storage and Stability:**

Store at -20°C/1 year

**Immunogen:**

The antiserum was produced against synthesized non-phosphopeptide derived from human G3BP-1 around the phosphorylation site of serine 232 (S-S-SP-P-A).

**Specificity:**

G3BP-1 (Ab-232) antibody detects endogenous levels of total G3BP-1 protein.

**Tested Application:** WB and IHC

**Application Notes:** Rabbit IgG in phosphate buffered saline (without Mg<sup>2+</sup> and Ca<sup>2+</sup>), pH 7.4, 150mM NaCl, 0.02% sodium azide and 50% glycerol.

**Raised In:** Rabbit

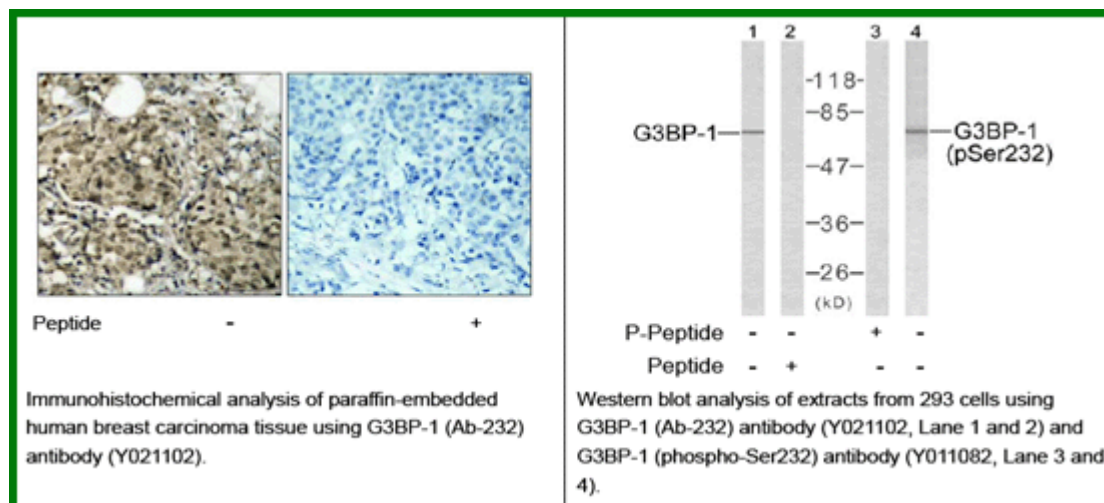
**Purity:** The antibody was affinity-purified from rabbit antiserum by affinity-chromatography using epitope-specific immunogen.

**Storage buffer:** WB: 1:500~1:1000 IHC: 1:50~1:100

**Form:** Liquid

**Reference:**

Tao WA, et al. (2005) Nat Methods. 2 (8): 591-598. Zheng H, et al. (2005) Mol Cell Proteomics. 4(6):721-730. Beausoleil SA, et al. (2004) Proc Natl Acad Sci USA.101 (33): 12130-12135. Tourrihre H, et al. (2003) J Cell Biol.160 (6): 823-831.



**For research use only**

Antagene, Inc. Toll Free: 1-866-964-2589, Fax: 1-888-225-1868, [info@antageneinc.com](mailto:info@antageneinc.com),  
[www.antageneinc.com](http://www.antageneinc.com)