

## p53 (Ab-315) Antibody

**Cat. #:** ANTY021091

**Species:** Human

**Quantity:** 100ug

**Concentration:** 100ug/100ul

**Storage and Stability:**

Store at -20°C/1 year

**Immunogen:**

The antiserum was produced against synthesized non-phosphopeptide derived from human p53 around the phosphorylation site of serine 315 (S-S-SP-P-Q).

**Specificity:**

p53 (Ab-315) antibody detects endogenous levels of total p53 protein.

**Tested Application:** WB

**Application Notes:** Rabbit IgG in phosphate buffered saline (without Mg<sup>2+</sup> and Ca<sup>2+</sup>), pH 7.4, 150mM NaCl, 0.02% sodium azide and 50% glycerol.

**Raised In:** Rabbit

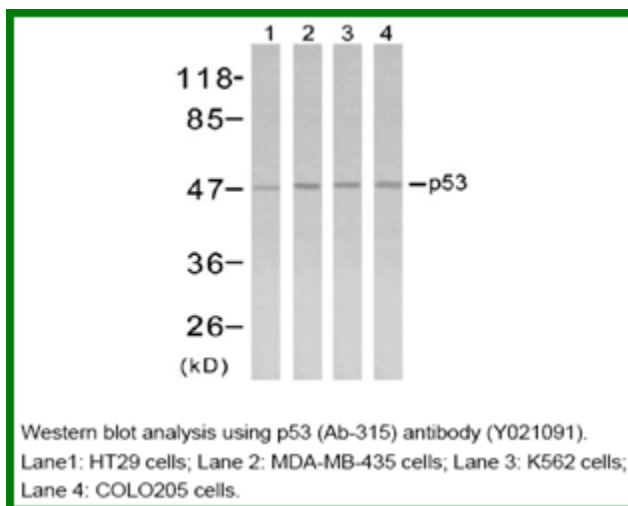
**Purity:** The antibody was affinity-purified from rabbit antiserum by affinity-chromatography using epitope-specific immunogen.

**Storage buffer:** WB: 1:500~1:1000

**Form:** Liquid

**Reference:**

Lu, H. et al. (1997) Mol. Cell. Biol. 17, 5923-5934. Lohrum, M. et.al. (1996) Oncogene 13, 2527-2539. Pospíšilová S, et al. (2004) Biochem J; 378(Pt 3): 939-47. Merrick BA, et al. (2001) Biochemistry; 40(13): 4053-66.



**For research use only**

Antagene, Inc. Toll Free: 1-866-964-2589, Fax: 1-888-225-1868, [info@antageneinc.com](mailto:info@antageneinc.com),  
[www.antageneinc.com](http://www.antageneinc.com)