

### p53 (Ab-46) Antibody

**Cat. #:** ANTY021090

**Species:** Human

**Quantity:** 100ug

**Concentration :** 100ug/100ul

**Storage and Stability:** Store at -20°C/1 year

**Immunogen:** The antiserum was produced against synthesized non-phosphopeptide derived from human p53 around the phosphorylation site of serine 46 (M-L-SP-P-D).

**Specificity:** p53 (Ab-46) antibody detects endogenous levels of total p53 protein.

**Tested Application:** WB

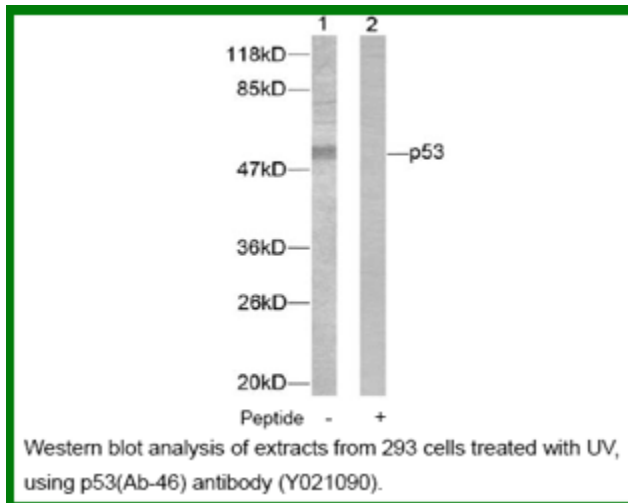
**Application Notes:**

Rabbit IgG in phosphate buffered saline (without Mg<sup>2+</sup> and Ca<sup>2+</sup>), pH 7.4, 150mM NaCl, 0.02% sodium azide and 50% glycerol.

**Raised In:** Rabbit

**Storage buffer:** WB: 1:500~1:1000

**Form:** Liquid



**For research use only**

Antagene, Inc. Toll Free: 1-866-964-2589, Fax: 1-888-225-1868, [info@antageneinc.com](mailto:info@antageneinc.com),  
[www.antageneinc.com](http://www.antageneinc.com)