

## p53 (Ab-15) Antibody

**Cat. #:** ANTY021085

**Species:** Human

**Quantity:** 100ug

**Concentration:** 100ug/100ul

**Storage and Stability:**

Store at -20°C/1 year

**Immunogen:**

The antiserum was produced against synthesized non-phosphopeptide derived from human p53 around the phosphorylation site of serine15 (P-L-SP-Q-E).

**Specificity:**

p53 (Ab-15) antibody detects endogenous levels of total p53 protein.

**Tested Application:** WB and IHC

**Application Notes:** Rabbit IgG in phosphate buffered saline (without Mg<sup>2+</sup> and Ca<sup>2+</sup>), pH 7.4, 150mM NaCl, 0.02% sodium azide and 50% glycerol.

**Raised In:** Rabbit

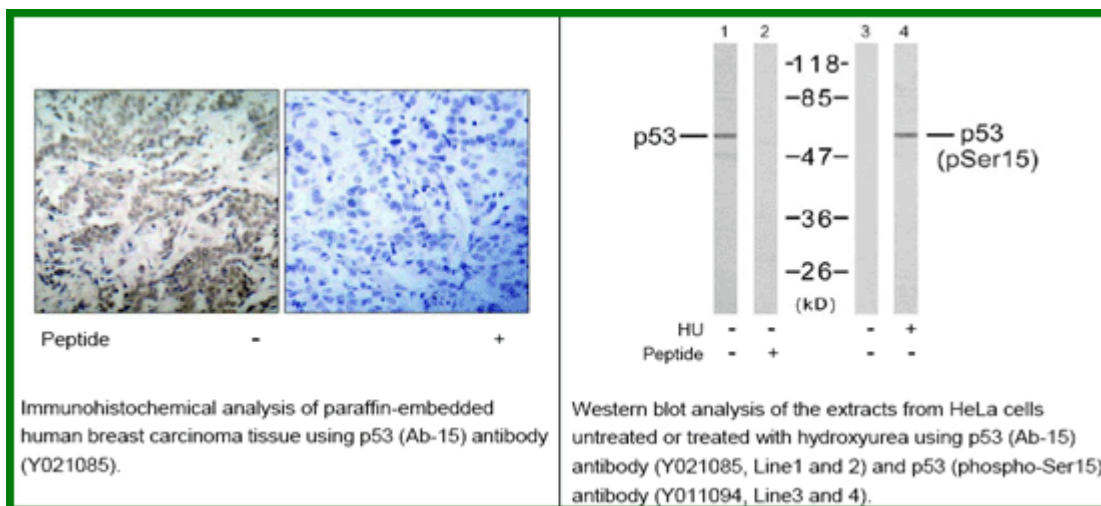
**Purity:** The antibody was affinity-purified from rabbit antiserum by affinity-chromatography using epitope-specific immunogen.

**Storage buffer:** WB:1:500~1000 IHC: 1:50~1:100

**Form:** Liquid

**Reference:**

Lin T, et al. (2005) Nat Cell Biol; 7(2): 165-71. Vega FM, et al. (2004) Mol Cell Biol; 24(23): 10366-80. Li J, et al. (2004) J Biol Chem; 279(40): 41275-9. Wang J, et al. (2004) J Biol Chem; 279(38): 39584-92.



**For research use only**

Antagene, Inc. Toll Free: 1-866-964-2589, Fax: 1-888-225-1868, [info@antageneinc.com](mailto:info@antageneinc.com),  
[www.antageneinc.com](http://www.antageneinc.com)