

BCL-XL (Ab-62) Antibody

Cat. #: ANTY021061

Species: Human, Mouse, Rat

Quantity: 100ug

Concentration: 100ug/100ul

Storage and Stability:

Store at -20°C/1 year

Immunogen:

This antiserum was produced against synthesized non-phosphopeptide derived from human BCL-XL around the phosphorylation site of serine 62 (A-D-SP-P-A).

Specificity:

BCL-XL (Ab-62) antibody detects endogenous levels of total BCL-XL protein.

Tested Application: WB

Application Notes: Rabbit IgG in phosphate buffered saline (without Mg²⁺ and Ca²⁺), pH 7.4, 150mM NaCl, 0.02% sodium azide and 50% glycerol.

Raised In: Rabbit

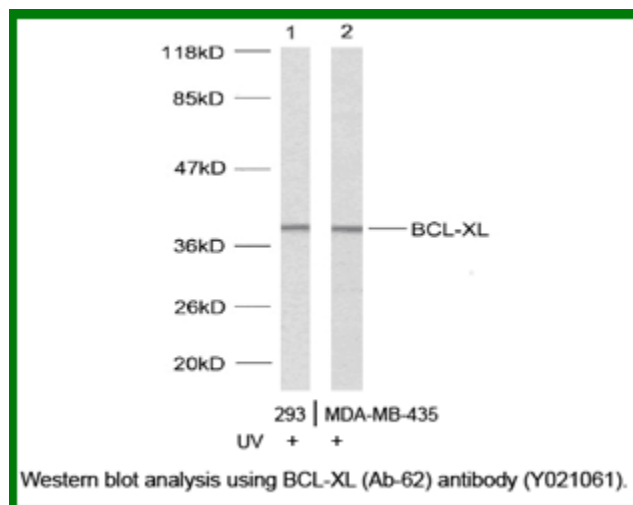
Purity: The antibody was affinity-purified from rabbit antiserum by affinity-chromatography using epitope-specific immunogen.

Storage buffer: WB: 1:500~1:1000

Form: Liquid

Reference:

Basu A, et.al. (2003) Mar 13; 538(1-3): 41-7 Cheng E.H.-Y. et.al. (1996) Nature 379:554-556. Sattler M. et.al. (1997), Science 275:983-986. Muchmore S.W.et.al (1996).Nature 381:335-341 Yu J., Zhang L. Mol. (2001)Cell 7:673-682



For research use only

Antagene, Inc. Toll Free: 1-866-964-2589, Fax: 1-888-225-1868, info@antageneinc.com,
www.antageneinc.com