

ATF4 (Ab-245) Antibody

Cat. #: ANTY021053

Species: Human

Quantity: 100ug

Concentration: 100ug/100ul

Storage and Stability:

Store at -20°C/1 year

Immunogen:

This antiserum was produced against synthesized non-phosphopeptide derived from human ATF4 around the phosphorylation site of serine 245 (N-R-SP-L-P).

Specificity:

ATF4 (Ab-245) antibody detects endogenous levels of total ATF4 protein.

Tested Application: IHC

Application Notes: Rabbit IgG in phosphate buffered saline (without Mg²⁺ and Ca²⁺), pH 7.4, 150mM NaCl, 0.02% sodium azide and 50% glycerol.

Raised In: Rabbit

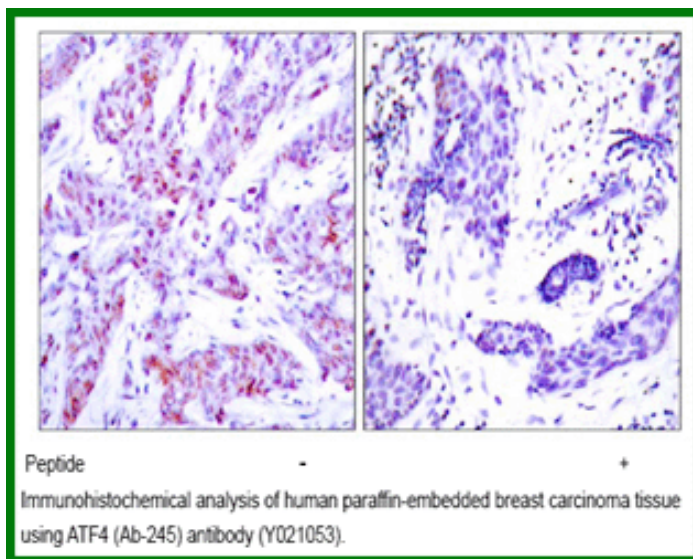
Purity: The antibody was affinity-purified from rabbit antiserum by affinity-chromatography using epitope-specific immunogen.

Storage buffer: IHC: 1:50~1:100

Form: Liquid

Reference:

Yang X, et al. (2004). Cell.117(3): 387-398.



For research use only

Antagene, Inc. Toll Free: 1-866-964-2589, Fax: 1-888-225-1868, info@antageneinc.com,
www.antageneinc.com