

GATA1 (Ab-310) Antibody

Cat. #: ANTY021042

Species: Human, Mouse and Rat

Quantity: 100ug

Concentration : 100ug/100ul

Storage and Stability: Store at -20°C/1 year

Immunogen: The antiserum was produced against synthesized non-phosphopeptide derived from human GATA1 around the phosphorylation site of serine 310 (K-A-SP-G-K).

Specificity: GATA1 (Ab-310) antibody detects endogenous levels of total GATA1 protein.

Tested Application: WB

Application Notes:

Rabbit IgG in phosphate buffered saline (without Mg²⁺ and Ca²⁺), pH 7.4, 150mM NaCl, 0.02% sodium azide and 50% glycerol.

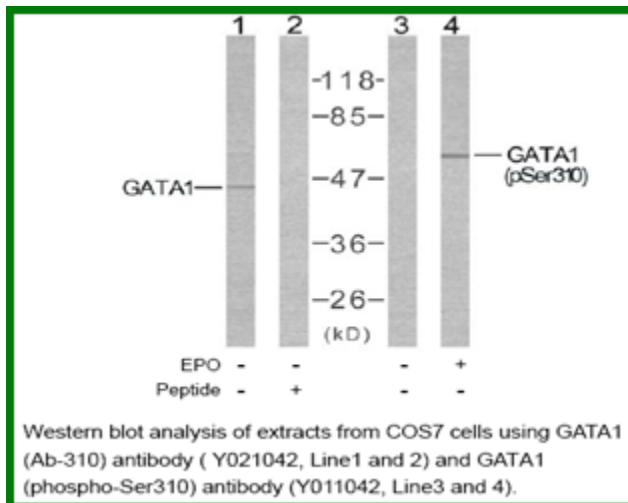
Raised In: Rabbit

Purity: The antibody was affinity-purified from rabbit antiserum by affinity-chromatography using epitope-specific immunogen.

Storage buffer: WB: 1:500~1:1000

Form: Liquid

Reference : Kadri Z, et al.(2005)Mol Cell Biol 2005 Sep; 25(17): 7412-22.



For research use only

Antagene, Inc. Toll Free: 1-866-964-2589, Fax: 1-888-225-1868, info@antageneinc.com,
www.antageneinc.com