

### c-Jun (Ab-63) Antibody

**Cat. #:** ANTY021001

**Species:** Human, Mouse, Rat

**Quantity:** 100ug

**Concentration:** 100ug/100ul

**Storage and Stability:**

Store at -20°C/1 year

**Immunogen:**

The antiserum was produced against synthesized non-phosphopeptide derived from human c-Jun around the phosphorylation site of serine 63 (L-T-SP-P-D).

**Specificity:**

c-Jun ( Ab-63) antibody detects endogenous levels of c-Jun protein around serine 63.

**Tested application:** WB

**Application Notes:** Rabbit IgG in phosphate buffered saline (without Mg<sup>2+</sup> and Ca<sup>2+</sup>), pH 7.4, 150mM NaCl, 0.02% sodium azide and 50% glycerol.

**Raised In:** Rabbit

**Purity:**

The antibody was affinity-purified from rabbit antiserum by affinity-chromatography using epitope-specific immunogen.

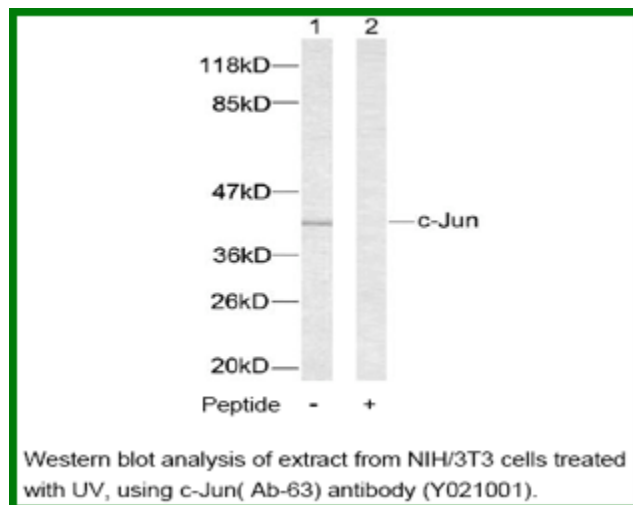
**Storage buffer:**

WB: 1:500~1:1000

**Form:** Liquid

**Reference:**

Wei W, et al. (2005). Cancer Cell. 8(1): 25-33. Sevilla A, et al. (2004). Oncogene.23 (55): 8950-8958. Li L, et al. (2004). J Biol Chem.279 (6): 4058-4065. Hurd C, et al. (2002). Oncogene.21 (14): 2154-2160.



**For research use only**

Antagene, Inc. Toll Free: 1-866-964-2589, Fax: 1-888-225-1868, [info@antageneinc.com](mailto:info@antageneinc.com),  
[www.antageneinc.com](http://www.antageneinc.com)