



MEK1 (Phospho-Ser221) Antibody

Cat. # ANTY011161

Species: Human, Mouse and Rat

Quantity: 100ug

Concentration: 100ug/100ul

Storage and Stability: Store at -20°C/1 year

Immunogen : The antiserum was produced against synthesized phosphopeptide derived from human MEK1 around the phosphorylation site of serine 221 (A-N-SP-F-V).

Specificity: MEK1 (phospho-Ser221) antibody detects endogenous levels of MEK1 only when phosphorylated at serine 221.

Tested application: WB and IHC

Application Notes: Rabbit IgG in phosphate buffered saline (without Mg²⁺ and Ca²⁺), pH 7.4, 150mM NaCl, 0.02% sodium azide and 50% glycerol.

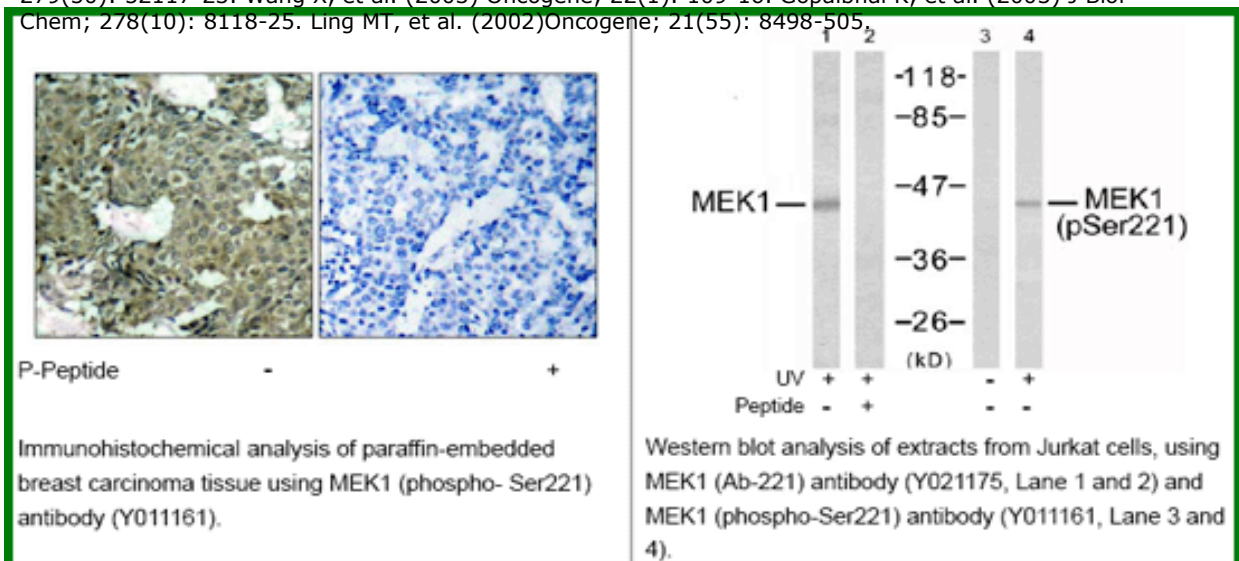
Raised In: Rabbit

Purity : The antibody was affinity-purified from rabbit antiserum by affinity-chromatography using epitope-specific phosphopeptide. The antibody against non-phosphopeptide was removed by chromatography using non-phosphopeptide corresponding to the phosphorylation site.

Storage buffer: WB: 1:500~1:1000 IHC: 1:50~1:100

Form: Liquid

References: Zebisch A, et al. (2006) Cancer Res; 66(7): 3401-8. Luciano BS, et al.(2006) J Biol Chem; 279(50): 52117-23. Wang X, et al. (2003) Oncogene; 22(1): 109-16. Gopalbhai K, et al. (2003) J Biol Chem; 278(10): 8118-25. Ling M1, et al. (2002)Oncogene; 21(55): 8498-505.



For research use only

Antagene, Inc. Toll Free: 1-866-964-2589, Fax: 1-888-225-1868, info@antageneinc.com,
www.antageneinc.com