



## PTEN (Phospho-Ser380/Thr382/Thr383) Antibody

**Cat. #** ANTY011056

**Species:** Human, Mouse and Rat

**Quantity:** 100ug

**Concentration:** 100ug/100ul

**Storage and Stability:** Store at -20°C/1 year

**Immunogen :** The antiserum was produced against synthesized phosphopeptide derived from human PTEN around the phosphorylation site of serine 380 and threonine 382/383 (R-Y-SP-D-TP-TP-D-S).

**Specificity:** PTEN (phospho-Ser380/Thr382/Thr383) antibody detects endogenous levels of PTEN only when phosphorylated at serine 380 and threonine 382/383.

**Tested application:** WB and IHC

**Application Notes:** Rabbit IgG in phosphate buffered saline (without Mg<sup>2+</sup> and Ca<sup>2+</sup>), pH 7.4, 150mM NaCl, 0.02% sodium azide and 50% glycerol.

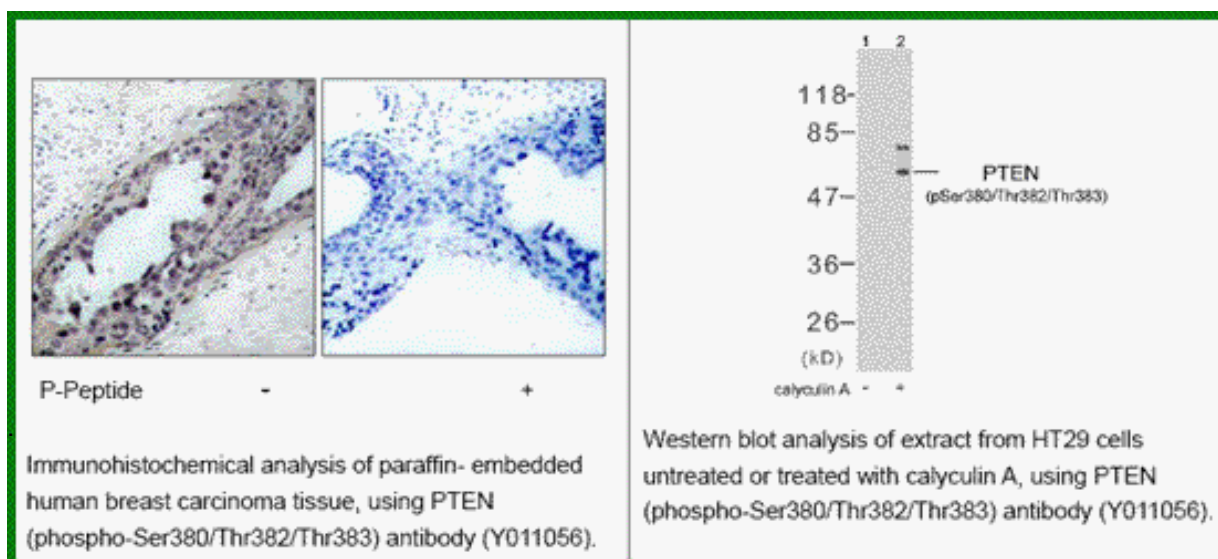
**Raised In:** Rabbit

**Purity :** The antibody was affinity-purified from rabbit antiserum by affinity-chromatography using epitope-specific phosphopeptide. The antibody against non-phosphopeptide was removed by chromatography using non-phosphopeptide corresponding to the phosphorylation site.

**Storage buffer:** WB: 1:500~1:1000 IHC:1:50~100

**Form:** Liquid

**References:** Al-Khouri AM, et al. (2005) J Biol Chem. 280(42):35195-35202. Torres J, et al. (2001) J Biol Chem. 276(2): 993-998. Vazquez F, et al. (2000) Mol Cell Biol. 20(14): 5010-5018.



**For research use only**

Antagene, Inc. Toll Free: 1-866-964-2589, Fax: 1-888-225-1868, [info@antageneinc.com](mailto:info@antageneinc.com),  
[www.antageneinc.com](http://www.antageneinc.com)