

## **Anti-Human Podoplanin Antibody (Clone NZ-1)**

**Catalog Number: 11-009**

**Size: 100 µg (0.2ml)**

**Description:** Podoplanin is a well-recognized lymphatic endothelium marker, which can be used to reliably distinguish lymphatic vessels from blood vessels. This rat monoclonal antibody NZ-1 (IgG2a) against human podoplanin works well for immunohistochemistry with **formalin-fixed paraffin embedded sections**. Therefore, it will be a useful tool to study lymphatic vessel density in and around human tumors. This antibody also can be used in FACS sorting.

**Host Species:** Rat

**Buffer:** PBS contains 0.09% NaN<sub>3</sub>

**Formulation:** Purified rat IgG2a

**Stability:** The antibody is stable at 4°C for >six month or can be stored in working aliquots at -20°C for more than a year.

**Cross-Reactivity:** The antibody does not cross-react with mouse podoplanin. Other species not tested.

**Specificity:** The monoclonal antibody will detect human podoplanin on the surface of lymphatic endothelial cells and kidney podocytes by immunostaining or immunohistochemistry. It works well with paraffin sections. The antibody also works in Western blotting, immunoprecipitation and FACS sorting.

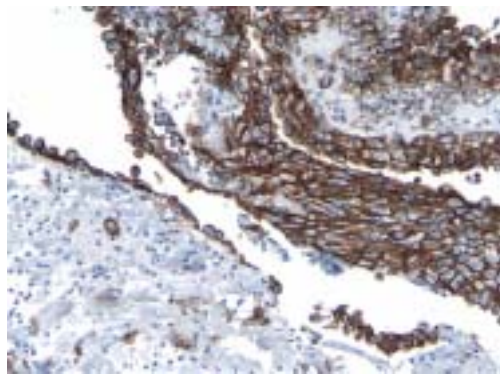
**Immunostaining/Immunohistochemistry:** Use 1:200 dilution

**Western blotting:** Use 1:200 dilution or more

**Immunoprecipitation:** For IP use 1:50 dilution

**FACS:** Use 1:200 dilution

**Usage:** This antibody is offered for research use only. **Not for human use!**



**NZ-1 Staining of Human Mesothelial Cells**



**AngioBio Co.**  
2658 Del Mar Heights Road #273  
Del Mar, CA 92014

Tel: 858 764-0990  
Fax: 858 764-0999  
Email: [info@angiobio.com](mailto:info@angiobio.com)