

Anti-Prox1 Antibody

Catalog Number: 11-002

Size: 0.2 ml

Description: Prox1 is a homeobox gene and acts as a master switch for lymphatic endothelial phenotype. Expression of Prox1 in blood endothelial cells induces expression of other lymphatic marker genes. Together with podoplanin, Prox1 can be used to reliably distinguish lymphatic vessels from blood vessels. This rabbit polyclonal antibody against Prox1 works well for immunohistochemistry with **formalin-fixed paraffin embedded sections**. Therefore, it will be a useful tool to study lymphatic vessel density in and around human tumors.

Host Species: rabbit

Buffer: 50% Glycerol

Formulation: Rabbit serum

Stability: The antibody is stable at -20°C for at least two years.

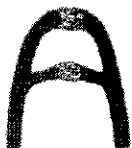
Cross-Reactivity: The antibody works equally well against human, mouse and rat Prox1. Other species not tested.

Specificity: The monoclonal antibody will detect Prox1 in the nucleus of lymphatic endothelial cells by immunostaining or immunohistochemistry. It works well with paraffin sections. The antibody also works in Western blotting.

Immunostaining/Immunohistochemistry: Use 1:500 to 1: 2000 dilution. When staining paraffin embedded sections, a simple antigen retrieval step is needed for best results: heat sections in pH6 citrate buffer at 100°C for 10 min in a special microwave oven.

Western blotting: Use 1:1000 dilution or more

Usage: This antibody is offered for research use only. **Not for human use!**

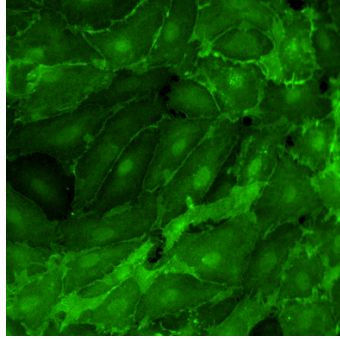


AngioBio Co.
2658 Del Mar Heights Road #273
Del Mar, CA 92014

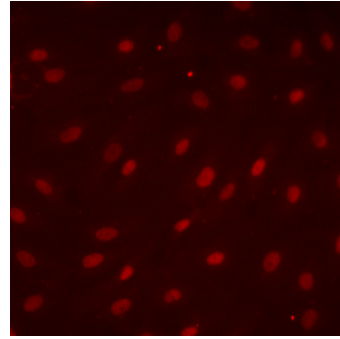
Tel: 858 764-0990
Fax: 858 764-0999
Email: info@angiobio.com

コスモ・バイオ株式会社

Immunostaining of Human Lymphatic Endothelial Cells

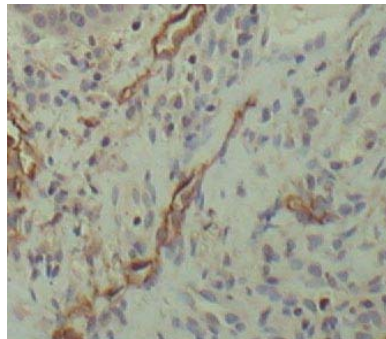


Anti-human podoplanin (11-003)

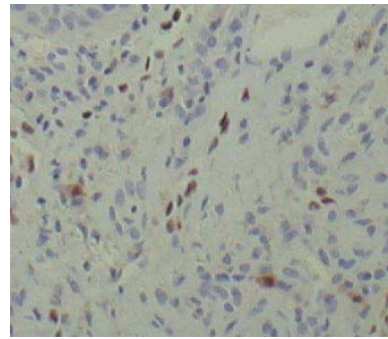


Anti-Prox1 (11-002)

Immunohistochemistry of Human Mucosa (paraffin embedded sections)

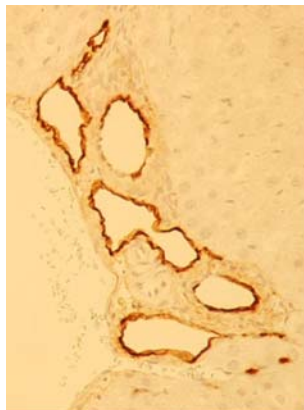


Anti-human podoplanin (11-003)

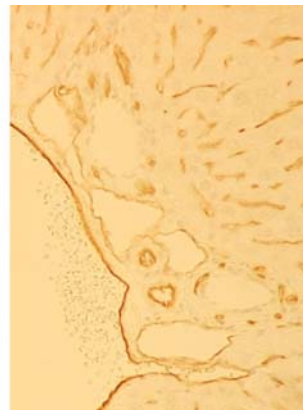


Anti-Prox1 antibody (11-002)

Immunohistochemistry of Mouse Liver (paraffin embedded section)



11-033 Anti-mouse podoplanin



CD31

Note: lymphatic vessels are podoplanin⁺CD31⁺, blood vessels are podoplanin⁻CD31⁺, bile ducts are podoplanin⁺CD31⁻