

PERFORMANCE DATA SHEET***Monoclonal anti-human CD133(AC133)/FITC*******mAb name/Clone:*** ANC9C5***Isotype:*** Mouse IgG1k***Immunogen:*** WERI-Rb-1 human retinoblastoma cells**CATALOG#:** 363-040**QUANTITY:** 120 tests**VOLUME IN VIAL:** 0.2ml**WORKING DILUTION:** 1:50 (80ul/test)

INFORMATION: Human CD133 is a 117kd 5 transmembrane protein expressed by a subset of hem found in blood and some other tissues. Increased expression of CD133 may be a predictor of deareas patients with metastatic cancer(3).

Antibody ANC9C5 recognizes epitope 1 of human CD133(AC133) present on full length CD133 tra retinoblastoma, and other cell types.

References: 1) Miraglia S, Buck DW, et al. (1997) Blood 90(12): 5013-5021. 2) Shmelkov SV, Rafi Biochem Cell Biol 37(4): 715-9. 3) Mehra N, Voest EE, et al. (2006) Clin Canc Res 12(16): 4859-66.

STORAGE CONDITIONS: *Store at 2 - 5°C.* Freeze/Thawing is not recommended. Protect from

PRODUCT STABILITY: Product should retain activity for at least 12 months after shipping date v recommended. Ship Date: _____

BUFFER: 50 mM Sodium Phosphate pH 7.5, 100 mM Potassium Chloride, 150mM NaCl, 5% Glyc NaN₃(as a preservative).

PRODUCTION: Protein A purified antibody from tissue culture supernatant was reacted with FITC was separated from antibody/FITC conjugate by desalting column. The antibody/FITC conjugate is a Fluorescein/IgG molar ratio of 8.4.

PERFORMANCE: Antibody ANC9C5 was tested for its ability to bind to full length CD133 transfe retinoblastoma cells, and other CD133+ cells in flow cytometry.

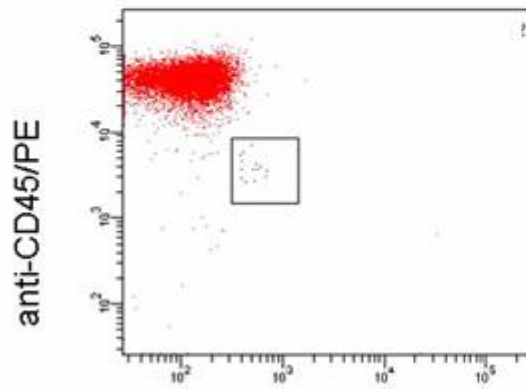
Five x 10⁵ ficoll prepared human peripheral blood leukocytes per tube were pre incubated with 20 un Ig (to block non specific binding) after which they were incubated 45 minutes on ice with 80 ul of ant dilution factor of 1:50 (2 ug/ml) and costained with anti-CD45/R-PE (cat #196-050). Cells were was and analyzed by FACS. A propidium iodide control tube was used to help accurately set the live cell population of the cells which costained CD45(lo)+ was positive for CD133 with a mean shift of 0.6 lc when compared to a Mouse IgG1/FITC negative control (Catalog #278-040) at a similar concentratio binding for this subpopulation was blocked when cells were pre incubated 10 minutes with 20 ul of 0. unconjugated anti-CD133 antibody (Catalog #363-020).

anti-CD133/FITC binds to a subpopulation of Human PBL

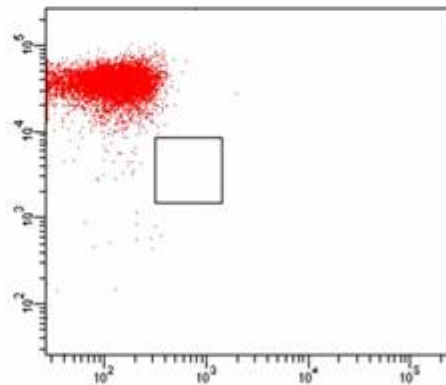
Fresh ficoll prepared human PBL

Live gate was set on propidium iodide non reactive lymphoid population

0.1% CD133+ subpopulation



Cells preblocked with excess of anti-CD133 Ab



anti-CD133/FITC

**This Product is intended for Laboratory Research use only.*