

# AbboMax, Inc

Innovation at Work

Description: Rabbit anti CK-19  
 Catalogue#: 602-670  
 Lot#: See the label  
 Size: 100 ug/200 ul  
 Host: Rabbit  
 Clone: N/A  
 Application: ELISA, WB, IHC  
 Reactivity: Hu, Ms, Rat, Bv

## Rabbit anti Cytokeratin-19 (CK-19) Antibody

Synonym: CK19, Keratin-19 (K19), KRT19, MGC15366, K1CS, Keratin type I 40kDa.

### ANTIGEN PREPARATION

A synthetic peptide corresponding to the N-terminus of human Cytokeratin protein.

### BACKGROUND

Cytokeratin-19 is one member of the type A (acidic) subfamily of low molecular weight keratins. The keratins are intermediate filament proteins responsible for the structural integrity of epithelial cells and are subdivided into cytokeratins and hair keratins. The type I (A) cytokeratins consist of acidic proteins which are arranged in pairs of heterotypic keratin chains. Unlike its related family members, this smallest known acidic cytokeratin is not paired with a basic cytokeratin in epithelial cells. It is specifically expressed in the periderm, the transiently superficial layer that envelops the developing epidermis. Keratin 19 is not expressed in hepatocytes, therefore, antibody to keratin 19 is useful in the identification of liver metastasis. The degree of keratin 19 staining in breast cancer distinguishes malignant from benign tumors. Keratin 19 is often co-expressed with keratin 7.

### PURIFICATION

The Rabbit IgG is purified by Epitope Affinity Purification.

### SPECIFICITY

This antibody only recognizes ~40 kDa of human Cytokeratin-19. It also reacts with mouse CK-19 protein. The other species are not tested.

### FORMULATION

This affinity purified antibody is supplied in sterile phosphate-buffered saline (pH7.2) containing antibody stabilizer

### STORAGE

The antibodies are stable for 12 months from date of receipt when stored at -20°C to -70°C. The antibodies can be stored at 2°C-8°C for three month without detectable loss of activity. Avoid repeated freezing-thawing cycles.

### APPLICATIONS/SUGGESTED WORKING DILUTIONS

Western Blot	0.1-1 µg/ml
ELISA	0.01-0.1 µg/ml
Immunoprecipitation	2-5 µg/ml
IHC	0.5-2 µg/ml
Flow cytometry	Not tested

<b>MOLECULAR WEIGHT:</b>	40 kDa
<b>POSITIVE CONTROL:</b>	MCF-7 cell lysate
<b>CELLULAR LOCATION:</b>	Cytoplasmic

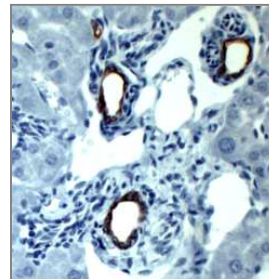
Optimal dilutions should be determined by researchers for the specific applications.

### DATA ATTACHMENTS

100 kDa  
75 kDa  
50 kDa  
37 kDa  
25 kDa  
20kDa



**WB:** The whole cell lysate derived from SK-BR-3 was immunoprobed by Rabbit anti-CK-19 (Cat#602-670) at 1:500. An immunoreactive band is observed around ~40kDa.



Mouse liver was stained with Anti-CK-19 antibody, (Cat# 602-670) at 1:500 for 10 min @ RT. Staining of formalin-fixed tissue requires boiling tissue sections in 10 mM Citrate Buffer, pH 6.0 for 10 min followed by cooling at RT for 20 min.

### REFERENCES

Yuan CC, et al. Cytokeratin-19 associated with apoptosis and chemosensitivity in human cervical cancer cells. Apoptosis. 1997; 2(1):101-5.

**FOR RESEARCH USE ONLY.**