

Description:	Rabbit anti AKT3
Catalogue#:	600-240
Lot#:	See the label
Size:	100 ug/200 ul
Host:	Rabbit
Clone:	N/A
Application:	ELISA, WB, IHC
Reactivity:	Hu, Rt, Ms

Rabbit anti AKT3/PKB γ Antibody

Synonym:

ANTIGEN PREPARATION

A synthetic peptide corresponding to the intra domain 120-132aa of human AKT3 protein.

BACKGROUND

Akt [also known as PKB (Protein kinase B) is a family of serine/threonine kinases that plays an important role in signal transduction. There are three known isoforms of Akt in mammalian cells [Akt1 (α), Akt2 (β) and Akt3 (γ); Akt2 and Akt3 have 81% and 83% homology in amino acid sequences with Akt1, respectively. Numerous studies have revealed that the expression pattern of Akt1 and Akt2 is ubiquitous, whereas Akt3 is expressed predominantly in brain, heart, and kidney. Akt is activated by insulin and growth and survival factors. EGF-induced Akt3 activation was demonstrated by Ser-472 phosphorylation of Akt3 but in a restrictive fashion. A recent report suggests a contribution of Akt3 to the aggressive phenotype of human breast cancer, thus Akt seems to confer a growth advantage to tumor cells.

PURIFICATION

The Rabbit IgG is purified by Epitope Affinity Purification.

SPECIFICITY

This antibody only recognizes ~56 kDa of human AKT3, not AKT1 or AKT2. It also reacts with mouse and rat AKT3 protein. The other species are not tested.

FORMULATION

This affinity purified antibody is supplied in sterile phosphate-buffered saline (pH7.2) containing antibody stabilizer

STORAGE

The antibodies are stable for 12 months from date of receipt when stored at -20°C to -70°C . The antibodies can be stored at 2°C - 8°C for three month without detectable loss of activity. Avoid repeated freezing-thawing cycles.

APPLICATIONS/SUGGESTED WORKING DILUTIONS

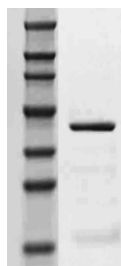
Western Blot	0.1-1 $\mu\text{g/ml}$
ELISA	0.01-0.1 $\mu\text{g/ml}$
Immunoprecipitation	2-5 $\mu\text{g/ml}$
IHC	0.5-2 $\mu\text{g/ml}$
Flow cytometry	Not tested

MOLECULAR WEIGHT:	56 kDa
POSITIVE CONTROL:	Hela lysate
CELLULAR LOCATION:	Cytoplasmic or membrane

Optimal dilutions should be determined by researchers for the specific applications.

DATA ATTACHMENTS

116 kDa
97 kDa
80 kDa
66 kDa
45 kDa
37 kDa
25 kDa



Western Blot: The Cell lysate derived from HELA cell line was immuno-blotted by Rabbit anti AKT3, (Cat#600-240) at 1:500.

REFERENCES

Kaname Nakatani, et al. Up-regulation of Akt3 in Estrogen Receptor-deficient Breast Cancers and Androgen-independent Prostate Cancer Lines. THE JOURNAL OF BIOLOGICAL CHEMISTRY. Vol. 274, No. 31, Issue of July 30, pp. 21528–21532, 1999.

FOR RESEARCH USE ONLY.