

Anti-TRPV5

Product #: ACC-035
Current Lot #: AN-01
Host: Rabbit.

Epitope: Peptide (C)GLNLSEGDGEEVYHF corresponding to residues 715-729 of human TRPV5 (Accession [Q8NDW5](#)).

Epitope location: C-terminus, intracellular.

Homology with other species: Rat-11/15 residues identical; rabbit-13/15 residues identical.

Reactivity Confirmed: Rat, human.

Identity of a peptide: Confirmed by amino acid analysis.

Purity: Affinity purified on immobilized antigen.

Sample Sizes: 50 μ l or 0.2 ml after reconstitution of the lyophilized powder.

Storage before Reconstitution: Lyophilized powder can be stored intact at room temperature for several weeks. For longer periods, it should be stored at -20°C .

Reconstitution: 50 μ l or 0.2 ml deionized water, depending on the sample size.

Antibody Concentration after Reconstitution: 0.8mg/ml

Buffer after Reconstitution: Phosphate buffered saline (PBS), pH 7.4, 1% BSA, 0.05% NaN₃.

Storage after Reconstitution: The reconstituted solution can be stored at 4°C for up to 2 weeks. For longer periods, small aliquots should be stored at -20°C or below. Avoid multiple freezing and thawing. The further dilutions should be made using a carrier protein such as BSA (1%). Centrifuge all antibody preparations before use ($10000 \times g$ 5 min).

Control Antigen Included.

Control Antigen Storage before Reconstitution: Lyophilized powder can be stored intact at room temperature for several weeks. For longer periods, it should be stored at -20°C .

Control Antigen Reconstitution: 100 μ l water.

Control Antigen Storage after Reconstitution: -20°C .

PreadSORption Control: 1 μ g peptide per 1 μ g antibody.

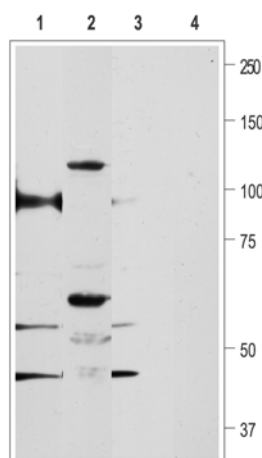
Standard Quality Control of Each Lot: Western blotting.

Applications:

Western Blotting: Rat kidney, human prostate cancer-PC3 (1:200). (It is highly recommended to add 0.1-0.5% Triton X-100 to the antibody solution).

For research purposes only, not for human use.

Last Update: February 10, 2005.



Western blotting of rat kidney (lanes 1,3) and PC3 cell line (lanes 2,4) lysates:

1,2. Anti-TRPV5 antibody, 1:200.

3,4. Anti-TRPV5 antibody, preincubated with the control peptide antigen.