

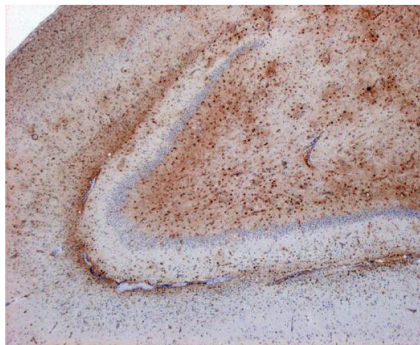


PAD2 (Peptidylarginine Deiminase 2) IgG Rabbit Polyclonal Antibody (Purified IgG Fraction)

Catalog Number : SML-ROI002-EX
Volume : 0.1 mL Concentration of IgG : 0.12 mg/mL
Antigen : Human PAD2 recombinant protein, Molecular weight 76 kDa
Host : Rabbit
Supplied As : IgG fraction purified from rabbit serum.
Prepared in 10 mM Tris (pH 7.4), 0.14 M NaCl and 0.05% NaN₃.
Storage and Stability: 2-8°C, 5 years
Tested applications :

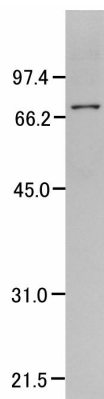
- Immunofluorescence (1:100 1:300 dilution)
- immunohistochemistry (1:100 1:300 dilution)
- Western Blot (1:500 1:2,000 dilution)

Cross Reactivity: Cross reacts with Human PAD2.
Not yet tested in other species.



[Immunohistochemical staining]

Hippocampus of Alzheimer's Disease stained with PAD2 antibody (ROI002) at 1:300 dilution and developed by 3,3' diaminobenzidine. Dentate gyrus and stratum radiatum of CA1 and CA2 areas stained.



[Western blot analysis]

Lane : Human brain tissue extract
PAD2 antibody (ROI002) at 1:1,000 dilution used.

References :

1. Ishigami, A. et al., Abnormal accumulation of citrullinated proteins catalyzed by peptidylarginine deiminase in hippocampal extracts from patients with Alzheimer's disease. *J. Neurosci. Res.* **80** 120 128 (2005)
2. Ishigami, A. et al., Human peptidylarginine deiminase type II: Molecular cloning, gene organization and expression in human skin. *Arch. Biochem. Biophys.* **407** 25 31 (2002)

For Research Use Only

