



Anti mouse Endomucin Antibody, FITC label

Cat#: REC-RCAB008M-FF

Quantity: 100 μ L

【Background】

Endomucin is an endothelial sialomucin closely related to CD34. High expression of Endomucin was confined to the mouse bone marrow KSL hematopoietic stem cells (HSCs) and progenitor cells, and, importantly, long-term repopulating (LTR)-HSCs were exclusively present in the Endomucin+CD34-KSL population. Notably, in the yolk sac, Endomucin expression separated multipotent hematopoietic cells from committed erythroid progenitor in the cell fraction positive for CD41, an early embryonic hematopoietic marker.

【Product information】

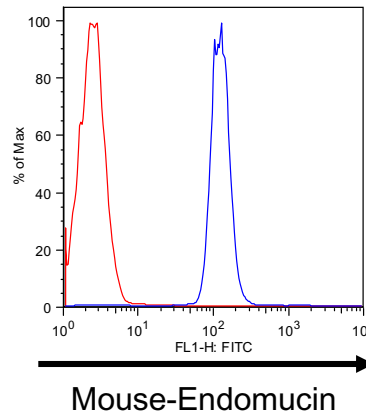
| | |
|----------------------|-------------------------------|
| Host | Rat |
| Specificity | mouse |
| Clone name | 1E7 |
| Concentration | 1mg/mL |
| Application | FCM |
| Storage Buffer | PBS (incl.0.01% sodium azide) |
| Storage instructions | 4°C |

| | | |
|-------------------|-----|------|
| Application notes | FCM | 1/10 |
|-------------------|-----|------|

【 Application 】

Flow cytometry Analysis

Detection of cell membrane mouse Endomucin in Ba/F3 cell lines. Cells were stained using FITC-conjugated anti mouse-Endomucin antibody (blue) or anti-rat IgG FITC conjugated mAb (red). Flow cytometry was performed on FACSCalibur.



【Reference】 (1) Azusa M, et al. JEM (2005) Dec 5, Vol. 202 No.11, p1483

Distributor



COSMO BIO Co., LTD.

Inspiration for Life Science

TOYO 2CHOME, KOTO-KU, TOKYO, 135-0016, JAPAN

URL: <http://www.cosmobio.co.jp> e-mail: export@cosmobio.co.jp

[Outside Japan]

[国内連絡先]

Phone : +81-3-5632-9617

Phone : +81-3-5632-9610

FAX : +81-3-5632-9618

FAX : +81-3-5632-9619