



Anti human-Endomucin antibody, Biotin label

Cat#: REC-RCAB007M-FB Quantity: 100 μ L

【Background】

Mucin-like membrane glycoproteins contain many serine and threonine residues, which carry large amounts of O-linked glycans, forcing the molecule into an extended structure. Endomucin encodes a 261 amino acid protein, which contains a transmembrane sequence and multiple glycosylation sites. Human endomucin is highly expressed in vascular tissues such as heart, kidney and lung. Mouse endomucin is an endothelial antigen found in venous endothelium, as well as capillaries, but not on arterial endothelium. Endomucin expression is increased while endothelial cells are proliferating or are stimulated by tumor-conditioned media or specific angiogenic factors such as bFGF (basic fibroblast growth factor) and TNF α . Two types of endomucin are identified that are termed Endomucin-1 and Endomucin-2. Exogenously expressed human Endomucin-1 and -2 are modified into 80-120 kDa glycoproteins. Both Endomucin-1 and Endomucin-2 negatively regulate cell adhesion to the extracellular matrix. Overexpression of Endomucin-1 inhibits adhesion and aggregation of hematopoietic cells, suggesting that Endomucin-1 may play a role in detachment of hematopoietic cells from endothelium during early hematopoiesis.

【Product information】

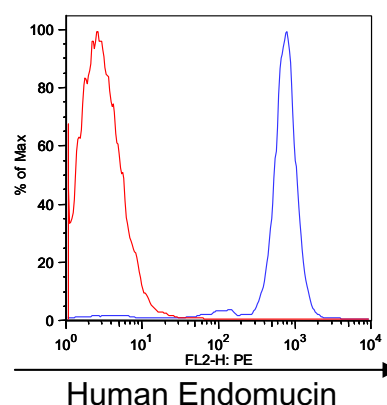
Host	Rat
Specificity	human
Clone name	TX18
Concentration	1mg/mL
Application	Western Blot Immunocytochemistry Immunoprecipitation FCM
Storage Buffer	PBS(incl.0.001% sodium azide)
Storage instructions	4°C

Application notes	FCM	1/10
-------------------	-----	------

【 Application 】

Flow cytometry Analysis

Detection of cell membrane human Endomucin in BW5147 cell lines. Cells were stained using biotin conjugated anti human-Endomucin antibody and streptavidin-FITC (blue) or streptavidin-FITC alone (red). Flow cytometry was performed on a FACS Calibur.



Distributor



COSMO BIO Co., LTD.
Inspiration for Life Science

TOYO 2CHOME, KOTO-KU, TOKYO, 135-0016, JAPAN

URL: <http://www.cosmobio.co.jp> e-mail: export@cosmobio.co.jp

[Outside Japan]

[国内連絡先]

Phone : +81-3-5632-9617

Phone : +81-3-5632-9610

FAX : +81-3-5632-9618

FAX : +81-3-5632-9619