

# Anti human ER alpha mouse monoclonal antibody

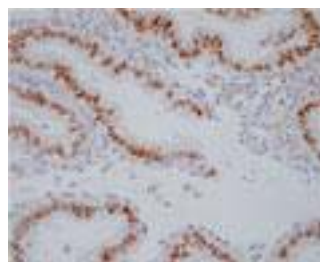
ER alpha: Estrogen Receptor alpha

<b>Code No</b>	PP-H4624-00 old No. 2ZH4624H
<b>Clone No.</b>	H4624
<b>Lot.</b>	A-1
<b>Concentration</b>	1 mg/mL
<b>Volume</b>	100 uL
<b>Ig Class</b>	G2a
<b>Description</b>	Estrogen receptor alpha (ERa, ER; NR3A1) is a member of steroid receptor (AR, GR, MR, PR). The natural ligand for ER is the classical estrogenic compound 17b-estradiol. ERa is expressed in a wide variety of tissues. Expression was found at variable levels in bones, in uterus, bladder, ovary, prostate, testis, epididymis, kidney, breast, heart, vessel wall, pituitary and hypothalamus. ER has a variety of central physiological roles, including those involved in maintenance of the reproductive, cardiovascular, musculoskeletal and central nervous systems. ERa has been shown to form homodimers as well as heterodimers with ERb. Both ERa and ERb can give rise to numerous isoforms.
<b>Nomenclature</b>	NR3A1
<b>Genbank</b>	M12674
<b>Origin</b>	Produced in BALB/c mouse ascites after inoculation with hybridoma of mouse myeloma cells (NS-1) and spleen cells derived from a BALB/c mouse immunized with Baculovirus-expressed recombinant human ER alpha (2-180 aa) .
<b>Specificity</b>	This antibody specifically recognizes human ER alpha and cross reacts with rat ER alpha. This antibody does not recognize ER beta. Not yet tested in other species.
<b>Purification</b>	Ammonium sulfate fractionation
<b>Formulation</b>	Physiological saline with 0.1% NaN <sub>3</sub> as a preservative.

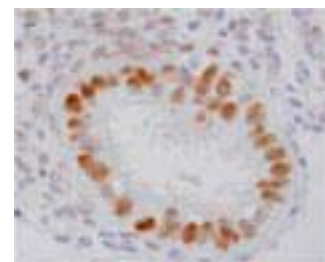
## Application / Recommended Concentration

In order to obtain the best results, optimal working dilutions should be determined by each individual user.

<b>Western Blot</b>	1 ug/mL
<b>Non reducing Western Blot</b>	Not yet tested
<b>ELISA</b>	0.3 ug/mL (A450=0.3)
<b>Immunoprecipitation</b>	Decide by use
<b>Supershift Assay</b>	Not yet tested
<b>Chromatin immunoprecipitation</b>	Not yet tested
<b>Immunohistochemistry</b>	10-20 ug/mL



Human Uterus  
Endometrial epithelium cell  
paraffin section



Human Uterus  
Endometrial epithelium cell  
paraffin section

## Storage

Store at 2 - 8 °C up to one month. For long-term storage, the solution may be frozen in working aliquots. Repeated freezing and thawing is not recommended. Storage in a frost-free freezer is not recommended.

## Reference

## Notes

Sodium azide may react with lead and copper plumbing to form explosive metal azides. Flush with large amounts of water during disposal.

FOR RESEARCH ONLY. NOT FOR USE IN HUMANS.

Not for Diagnostic or Therapeutic use. Purchase of this product does not include or carry any right to resell or transfer this product either as a stand-alone product or as a component of another product. Any use of this product other than the permitted use without the express written consent of Perseus Proteomics Inc. is prohibited.

**MADE IN JAPAN**

Aug 22, 2006



**COSMO BIO CO., LTD.**  
Inspiration for Life Science

Distributor:  
**Cosmo Bio Co., Ltd.**  
2-20, Toyo, 2Chome, Tokyo 135-0016, Japan  
TEL: +81-3-5632-9617 FAX: +81-3-5632-9618  
<http://www.cosmobio.co.jp>



Manufactured by  
**Perseus Proteomics Inc.**  
4-7-6, Komaba, Meguro-ku,  
Tokyo 153-0041, Japan  
<http://www.ppmx.com>

# Anti human ER $\alpha$ mouse monoclonal antibody

ER $\alpha$ : Estrogen Receptora

製品コード PP-H4624-00

Clone No. H4624

Lot. A-1

濃度 1mg/mL

容量 100 $\mu$ L

Ig class G2a

Nomenclature NR3A1

Genebank M12674

**由来** ヒトER $\alpha$ (2-180 aa) の Baculovirus 発現物を免疫した BALB/c マウスの脾臓細胞と、マウスミエローマ細胞 (NS-1) を融合して得たハイブリドーマを、BALB/c マウスに接種して得られた腹水。

**特異性** ヒトER $\alpha$ と特異的に反応する。ヒトER $\beta$ には反応しない。ラットERに交差反応する。その他の動物種との交差反応は未検討。

**精製法** 硫酸塩析法

**溶媒** 生理的食塩水(防腐剤として0.1% NaN3添加)

**Application** 使用濃度は実験にあわせて至適化が必要です。

**Western Blot** 可  
参考使用濃度 1  $\mu$ g/mL

**非還元 Western Blot** 未検討  
参考使用濃度 -

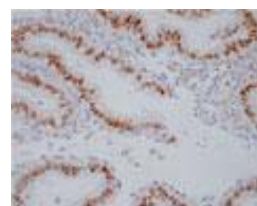
**ELISA** 可  
参考使用濃度 0.3  $\mu$ g/mL (A450=0.3)

**免疫沈降** 可  
参考使用濃度 適宜調製してください

**Supershift Assay** 未検討  
参考使用濃度 -

**クロマチン免疫沈降** 未検討  
参考使用濃度 -

**免疫染色** 可  
参考使用濃度 10-20  $\mu$ g/mL



ヒト  
子宮  
パラフィン切片



ヒト  
子宮  
パラフィン切片

**保存方法** 1ヶ月程度の保存の場合は、2~8°Cで保存可能です。長期保存の場合は、抗体を小分けした上で、-20°C以下での保存をお勧めします。また、凍結融解を繰り返すと、抗体が劣化し、本来の性能が得られない場合があるため、お避けください。

## 参考文献

**備考** 溶媒に含まれるNaN3は、鉛や銅と反応し爆発性化合物を形成する恐れがあります。廃棄の際には大量の水と一緒に希釈して廃棄してください。

FOR RESEARCH ONLY. NOT FOR USE IN HUMANS.

本製品は研究目的のみで使用することができます。人やそのほか動物の疾病診断、治療・予防に使用することはできません。研究目的以外で使用する場合は、あらかじめ弊社にご相談ください。

MADE IN JAPAN

Aug 22, 2006