



KAL-KB466

For research use only

Anti Human MS4A1 Polyclonal Antibody

Code No. KB466
Target MS4A1
Category Immunology
Gene ID 931
Primary Source HGNC:7315
Synonyms B1; S7; Bp35; CD20; MS4A2; LEU-16; MGC3969; MS4A1

Type Polyclonal Antibody
Immunogen Recombinant protein of full length Human MS4A1

Raised in Mouse
Myeloma -
Clone number -
Purification Protein A purified
Source Mouse Serum

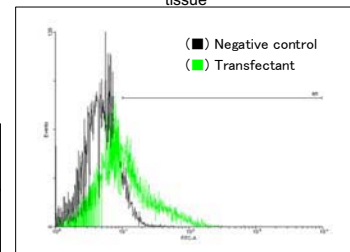
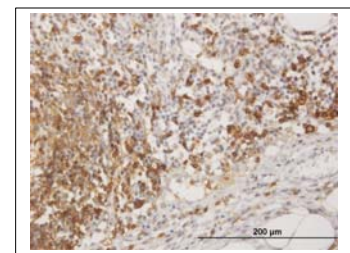
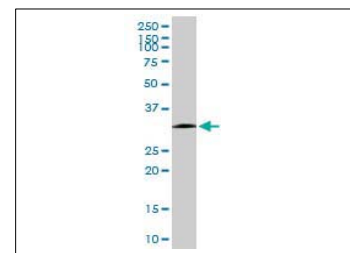
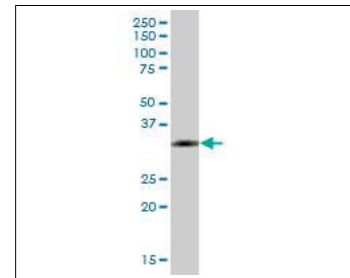
Isotype -
Cross Reactivity -
Label Unlabeled
Concentration 1 mg/mL
Contents (Volume) 50 µg
Buffer PBS, pH 7.2

Storage Store at - 20 °C long term, store at 4 °C short term. Avoid repeated freeze-thaw cycles.

Application WB,IHC,FCM

	ELISA	WB	IHC	ICC
	-	1.0	3.0	-
	IP	FCM	IF	Neutralization
	-	1.0	-	-

(µg/mL)



Reference

1. Stamenkovic I., et al. "Analysis of two cDNA clones encoding the B lymphocyte antigen CD20 (B1, Bp35), a type III integral membrane protein." J. Exp. Med. 167:1975-1980(1988)
2. Tedder T.F., et al. "Isolation and structure of a cDNA encoding the B1 (CD20) cell-surface antigen of human B lymphocytes." Proc. Natl. Acad. Sci. U.S.A. 85:208-212(1988)
3. Einfeld D.A., et al. "Molecular cloning of the human B cell CD20 receptor predicts a hydrophobic protein with multiple transmembrane domains." EMBO J. 7:711-717(1988)

UniPlot Summary

//Function: This protein may be involved in the regulation of B-cell activation and proliferation.
 //Subcellular location: Membrane; Multi-pass membrane protein.
 //Tissue specificity: Expressed on B-cells.
 //Sequence similarities: Belongs to the MS4A family.

Manufactured by TransGenic Inc.



COSMO BIO CO., LTD.
Inspiration for Life Science

TOYO 2CHOME, KOTO-KU, TOKYO, 135-0016, JAPAN

http://www.cosmobio.co.jp e-mail : export@cosmobio.co.jp

Phone : +81-3-5632-9617 FAX : +81-3-5632-9618