



PRODUCT DATA SHEET

Product : Anti-Lysozyme clone No.20G12
Cat.No : BC20 (400 μ l/vial 、 1mg/ml)

Host : Mouse monoclonal antibody IgG1

Species Reactivity : Hen egg ,others not tested.

Specificity : The antibodies react with lysozyme.

Immunogen : Hen egg white lysozyme

Format :

IgG fraction, purified from ascites fluid by ammonium sulfate precipitation and chromatography on DE52(Whatman Co.Ltd). Buffer : PBS(-)

Storage and Stability :

Stable for 2years when stored at less than -20°C . Aliquot to avoid freeze/thaw cycles.

Application and Suggested Dilutions:

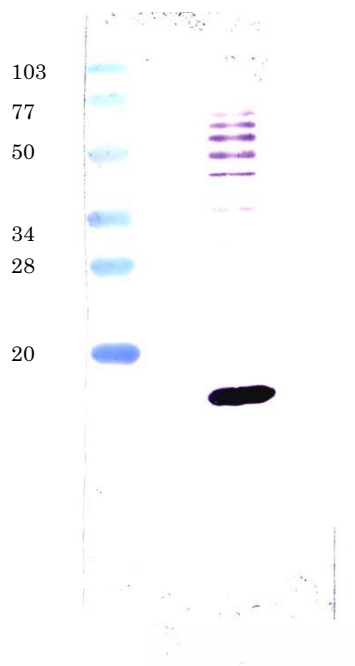
A working dilution of 1 : 500 is suggested for western blots and ELISAs.

The optimal dilution for a specific application should be determined by the researcher.

Limitations:

For in vitro research use only. Not for use in diagnostics or in humans.

[example : anti Lysozyme]



1) [poly-ubiquitination]

Incubate the lysozyme at for 90 minutes at 37°C in Reactive solution

< Reactive solution composition >

10 μ l	1 M Tris-HCl(pH9.0)
1.8 μ l	300 mM MgCl ₂
1.8 μ l	200 mM ATP
0.6 μ l	100 mM DTT
1 μ l	200 U/ μ l Inorganic Pyrophosphatase
45 μ l	E1,E2,E3 mixture
15 μ l	2 mg/ml lysozyme
15 μ l	10 mg/ml Ubiquitin
9.8 μ l	milliQ

total 100 μ l

2) 12.5% SDS-PAGE / Reactive solution 5 μ l

3) transfer to membrane at 6V/90minutes after SDS-PAGE

4) reaction by primary antibody / Anti-Lysozyme is diluted by 500 times.

5) Stain by NBT, BCIP

Distributor



COSMO BIO CO., LTD.

Inspiration for Life Science

TOYO EKIMAE BLDG. 2-20, TOYO 2CHOME
KOTO-KU, TOKYO 135-0016, JAPAN
TEL : +81-3-5632-9617
FAX : +81-3-5632-9618
URL : <http://www.cosmobio.co.jp/>
e-mail : export@cosmobio.co.jp

Manufacturer



HOKUDO CO.,LTD

4-28,West10,Hachiken9jyo,Nishi-ku,
Sapporo,063-0849,JAPAN
TEL. : +81-11-641-7507
FAX. : +81-11-644-9209
URL : <http://www.hokudo.co.jp>
E-mail : info@hokudo.co.jp

PRODUCT DATA SHEET

Product: Anti-Lysozyme clone No.20G12

Cat.No: BC20 (400 μ l/vial , 1mg/ml)

Host: Mouse monoclonal antibody IgG1

Species Reactivity

Hen egg ,others not tested.

Specifity

The antibodies react with lysozyme.

Immunogen

Hen egg white lysozyme

Format:

IgG fraction, purified from ascites fluid by ammonium sulfate precipitation and chromatography on DE52(Whatman Co.Ltd). Buffer : PBS(-)

Storage and Stability:

Stable for 2years when stored at less than -20 . Aliquot to avoid freeze/thaw cycles.

Application and Suggested Dilutions:

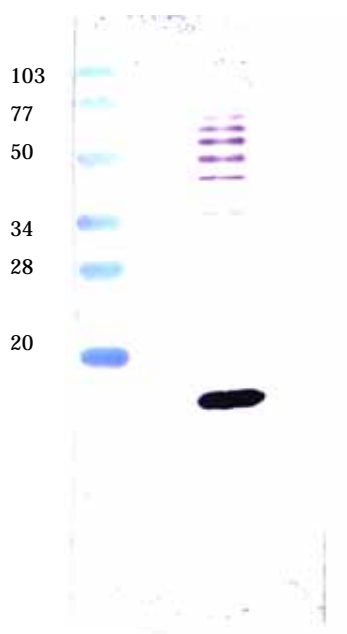
A working dilution of 1 : 500 is suggested for western blots and ELISAs.

The optimal dilution for a specific application should be determined by the researcher.

Limitations:

For in vitro research use only. Not for use in diagnostics or in humans.

[anti Lysozyme 使用例]



下記の反応液組成にて 37 90min incubation し、lysozyme を poly-ubiquitin 化した

<反応液組成>

10 μ l	1 M Tris-HCl(pH9.0)
1.8 μ l	300 mM MgCl ₂
1.8 μ l	200 mM ATP
0.6 μ l	100 mM DTT
1 μ l	200 U/ μ l Inorganic Pyrophosphatase
45 μ l	E1,E2,E3 mixture
15 μ l	2 mg/ml lysozyme
15 μ l	10 mg/ml Ubiquitin
9.8 μ l	milliQ 水

計 100 μ l

反応液を 5 μ l 12.5% SDS-PAGE で展開する。

電気泳動終了後 6V 90min にて membrane に転写する。

anti-Lysozyme は 500 倍希釈し、1 次抗体反応に用い、NBT ,

BCIP により発色させた。

HOKUDO CO.,LTD

4-28,West10,Hachiken9jyo,Nishi-ku,Sapporo,063-0849,JAPAN TEL.81-11-641-7507 FAX.81-11-644-9209

URL <http://www.hokudo.co.jp> e-mail info@hokudo.co.jp