



COSMO BIO CO., LTD.  
Inspiration for Life Science

## Cosmo Bio Co., Ltd

TOYO EKIMAE BLDG, 2-20, TOYO 2CHOME,  
KOTO-KU, TOKYO 135-0016, JAPAN

TEL : +81-3-5632-9617

FAX : +81-3-5632-9618

URL : <http://www.cosmobio.co.jp/>

e-mail : [export@cosmobio.co.jp](mailto:export@cosmobio.co.jp)

国内連絡先

TEL : 03-5632-9610

FAX : 03-5632-9619

## Catalog No. CBX00624

Mouse monoclonal antibody

Anti-Human CDKN1B

### ■ Formulation

Mouse monoclonal anti-human **CDKN1B** antibody in PBS (3.0 mM KCl, 1.5 mM KH<sub>2</sub>PO<sub>4</sub>, 140 mM NaCl, 8.0 mM Na<sub>2</sub>HPO<sub>4</sub> (pH 7.4)) containing 1% bovine serum albumin (BSA) and 0.05% sodium azide (NaN<sub>3</sub>).

### ■ Antibody concentration

100 µg/ml (1.0 ml)

### ■ Storage

Store at 2-8°C for up to one year.  
We recommend storing at -20°C for long-term storage.  
Avoid repeat freezing and thawing cycles.

### ■ Preparation

This antibody was purified using protein G column chromatography from culture supernatant of hybridoma cultured in a medium containing bovine IgG-depleted (approximately 95%) fetal bovine serum.

### ■ Sterility

Filtered through a 0.22 µm membrane.

### ■ Applications

WB, Dot Blot

### ■ Disposal

This antibody solution contains sodium azide (NaN<sub>3</sub>) as a preservative. There is a potential hazard that NaN<sub>3</sub> reacts with copper or lead to produce an explosive compound. For safe disposal, the vial has to be washed thoroughly with water.

### ■ Safety warnings and precautions

Caution must be taken to avoid contact with skin or eyes. In such a case, rinse thoroughly at once with water. Do not ingest, inhale, or swallow. Seek medical attention immediately.

Wear appropriate protective clothing such as laboratory overalls, safety glasses and gloves.

It is strongly advised that this product should be handled by people who have been well trained in laboratory techniques and that it is handled with care pursuant to the principles of good laboratory practice.

All chemicals are deemed potentially harmful.

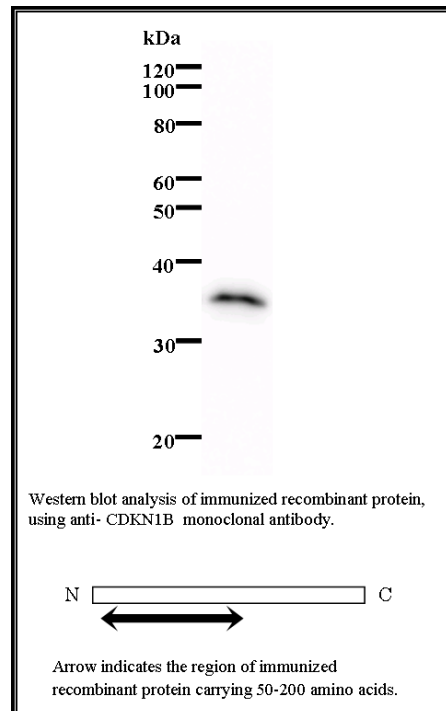
The vial is prone to fall over. Use caution, especially when the lid is off.

Lot No. **2144C8a-1**

Clone No. **2144C8a**

Antibody class : **IgG1**

Immunogen : **Recombinant**



FOR RESEARCH USE ONLY, NOT FOR USE IN DIAGNOSTIC PROCEDURES.

manufactured by BMR



Catalog No. **CBX00624**

**Mouse monoclonal antibody**

**Anti-Human CDKN1B**

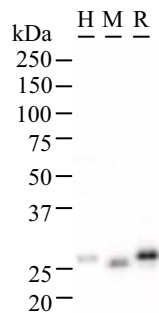
### ■ Background

This gene encodes a cyclin-dependent kinase inhibitor, which shares a limited similarity with CDK inhibitor CDKN1A/p21. The encoded protein binds to and prevents the activation of cyclin E-CDK2 or cyclin D-CDK4 complexes, and thus controls the cell cycle progression at G1. The degradation of this protein, which is triggered by its CDK dependent phosphorylation and subsequent ubiquitination by SCF complexes, is required for the cellular transition from quiescence to the proliferative state.[NCBI Entrez Gene Summary]

### ■ Recommended condition

WB: 0.2-2  $\mu$ g/ml

### ■ Application



Detection of CDKN1B by Western blot.

Samples: Whole cell lysate from human HeLa (H, 25  $\mu$ g), mouse NIH3T3 (M, 25  $\mu$ g) and rat F2408 (R, 25  $\mu$ g) cells. [Lot No.2144C8a -1]

Predicted molecular weight: 22 kDa