



COSMO BIO CO., LTD.  
Inspiration for Life Science

## Cosmo Bio Co., Ltd

TOYO EKIMAE BLDG, 2-20, TOYO 2CHOME,  
KOTO-KU, TOKYO 135-0016, JAPAN  
TEL : +81-3-5632-9617  
FAX : +81-3-5632-9618  
URL : <http://www.cosmobio.co.jp/>  
e-mail : [export@cosmobio.co.jp](mailto:export@cosmobio.co.jp)

国内連絡先  
TEL : 03-5632-9610  
FAX : 03-5632-9619

## Catalog No. CBX00545

Mouse monoclonal antibody

Anti-Human NR4A2

### ■ Formulation

Mouse monoclonal anti-human NR4A2 antibody in PBS (3.0 mM KCl, 1.5 mM KH<sub>2</sub>PO<sub>4</sub>, 140 mM NaCl, 8.0 mM Na<sub>2</sub>HPO<sub>4</sub> (pH 7.4)) containing 1% bovine serum albumin (BSA) and 0.05% sodium azide (NaN<sub>3</sub>).

### ■ Antibody concentration

100 µg/ml (1.0 ml)

### ■ Storage

Store at 2-8°C for up to one year.  
We recommend storing at -20°C for long-term storage.  
Avoid repeat freezing and thawing cycles.

### ■ Preparation

This antibody was purified using protein G column chromatography from culture supernatant of hybridoma cultured in a medium containing bovine IgG-depleted (approximately 95%) fetal bovine serum.

### ■ Sterility

Filtered through a 0.22 µm membrane.

### ■ Applications

WB, Dot Blot

### ■ Disposal

This antibody solution contains sodium azide (NaN<sub>3</sub>) as a preservative. There is a potential hazard that NaN<sub>3</sub> reacts with copper or lead to produce an explosive compound. For safe disposal, the vial has to be washed thoroughly with water.

### ■ Safety warnings and precautions

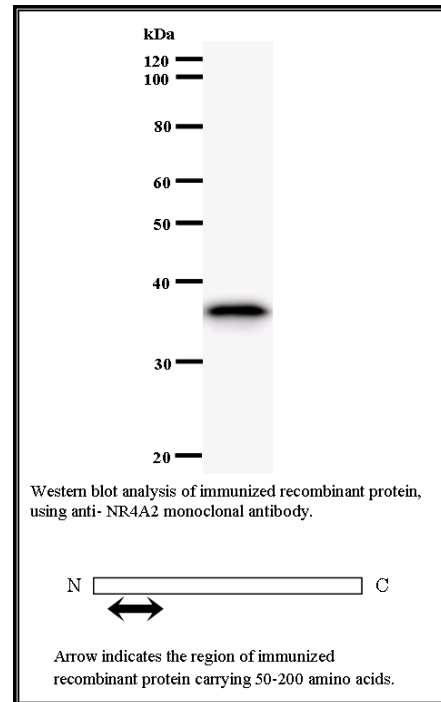
Caution must be taken to avoid contact with skin or eyes. In such a case, rinse thoroughly at once with water. Do not ingest, inhale, or swallow. Seek medical attention immediately.  
Wear appropriate protective clothing such as laboratory overalls, safety glasses and gloves.  
It is strongly advised that this product should be handled by people who have been well trained in laboratory techniques and that it is handled with care pursuant to the principles of good laboratory practice.  
All chemicals are deemed potentially harmful.  
The vial is prone to fall over. Use caution, especially when the lid is off.

Lot No. 447C2a-1

Clone No. 447C2a

Antibody class : IgG1

Immunogen : Recombinant



FOR RESEARCH USE ONLY, NOT FOR USE IN DIAGNOSTIC PROCEDURES.

manufactured by BMR



Catalog No. **CBX00545**

**Mouse monoclonal antibody**

**Anti-Human NR4A2**

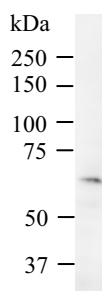
### ■ Background

This gene encodes a member of the steroid-thyroid hormone-retinoid receptor superfamily. The encoded protein may act as a transcription factor. Mutations in this gene have been associated with disorders related to dopaminergic dysfunction, including Parkinson disease, schizophrenia, and manic depression. Misregulation of this gene may be associated with rheumatoid arthritis. Four transcript variants encoding four distinct isoforms have been identified for this gene. Additional alternate splice variants may exist, but their full length nature has not been determined. [NCBI Entrez Gene Summary][NCBI Entrez Gene Summary]

### ■ Recommended condition

WB: 0.2-2  $\mu$ g/ml

### ■ Application



Detection of human NR4A2 by Western blot.  
Samples: Whole cell lysate (25  $\mu$ g) from HeLa cells. [Lot No. 447C2a-1]

Predicted molecular weight: 66 kDa