



COSMO BIO CO., LTD.  
Inspiration for Life Science

## Cosmo Bio Co., Ltd

TOYO EKIMAE BLDG, 2-20, TOYO 2CHOME,  
KOTO-KU, TOKYO 135-0016, JAPAN  
TEL : +81-3-5632-9617  
FAX : +81-3-5632-9618  
URL : <http://www.cosmobio.co.jp/>  
e-mail : [export@cosmobio.co.jp](mailto:export@cosmobio.co.jp)

### 国内連絡先

TEL : 03-5632-9610  
FAX : 03-5632-9619

## Catalog No. CBX00497

Mouse monoclonal antibody

Anti-Human ZNF76

### ■ Formulation

Mouse monoclonal anti-human ZNF76 antibody in PBS (3.0 mM KCl, 1.5 mM KH<sub>2</sub>PO<sub>4</sub>, 140 mM NaCl, 8.0 mM Na<sub>2</sub>HPO<sub>4</sub> (pH 7.4)) containing 1% bovine serum albumin (BSA) and 0.05% sodium azide (NaN<sub>3</sub>).

### ■ Antibody concentration

100 µg/ml

### ■ Storage

Store at 2-8°C for up to one year.  
We recommend storing at -20°C for long-term storage.  
Avoid repeat freezing and thawing cycles.

### ■ Preparation

This antibody was purified using protein G column chromatography from culture supernatant of hybridoma cultured in a medium containing bovine IgG-depleted (approximately 95%) fetal bovine serum.

### ■ Sterility

0.22 µm membrane

### ■ Applications

WB, IC, Dot Blot

### ■ Disposal

This antibody solution contains sodium azide (NaN<sub>3</sub>) as a preservative. There is a potential hazard that NaN<sub>3</sub> reacts with copper or lead to produce an explosive compound. For safe disposal, the vial has to be washed thoroughly with water.

### ■ Safety warnings and precautions

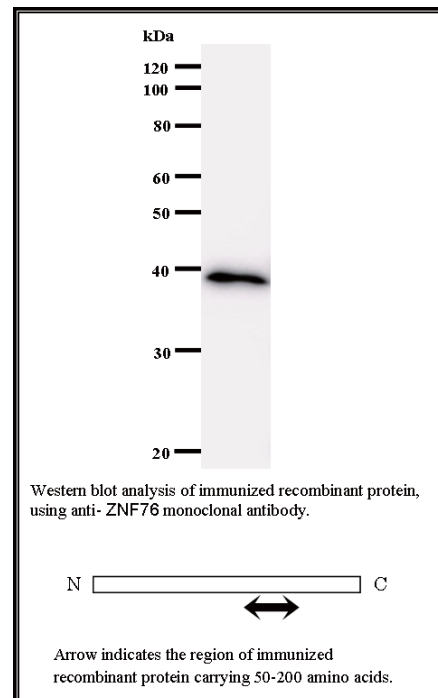
Caution must be taken to avoid contact with skin or eyes. In such a case, rinse thoroughly at once with water. Do not ingest, inhale, or swallow. Seek medical attention immediately.  
Wear appropriate protective clothing such as laboratory overalls, safety glasses and gloves.  
It is strongly advised that this product should be handled by people who have been well trained in laboratory techniques and that it is handled with care pursuant to the principles of good laboratory practice. All chemicals are deemed potentially harmful.  
The vial is prone to fall over. Use caution, especially when the lid is off.

Lot No. 3425C3a-1

Clone No. 3425C3a

Antibody class : IgG1

Immunogen : Recombinant



FOR RESEARCH USE ONLY, NOT FOR USE IN DIAGNOSTIC PROCEDURES.

manufactured by BMR