



Catalog No. **CBX00430**

Mouse monoclonal antibody

Anti-Human BTF3

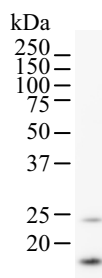
■ Background

This gene encodes the basic transcription factor 3. This protein forms a stable complex with RNA polymerase IIB and is required for transcriptional initiation. Alternative splicing results in multiple transcript variants encoding different isoforms. This gene has multiple pseudogenes. [NCBI Entrez Gene Summary]

■ Recommended condition

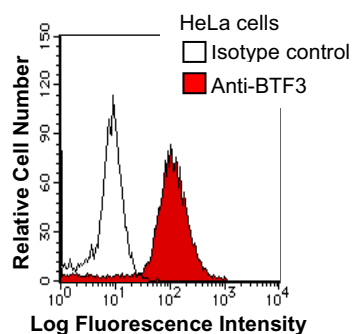
WB: 0.2-2 µg/ml FC: 0.5-2 µg/sample IC: 2-100 µg/ml

■ Application

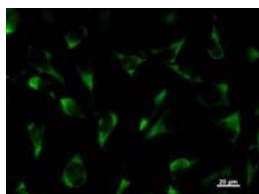


Detection of human BTF3 by Western blot.
Samples: Whole cell lysate (25 µg) from HeLa cells. [Lot No. 628C5a-1]

Predicted molecular weight: 22 kDa



HeLa cells were fixed in 2% paraformaldehyde/PBS and then permeabilized in 90% methanol. Cells were stained with anti-BTF3 mAb (shaded) or isotype control (unshaded) followed by Alexa Fluor® 488-conjugated goat anti-mouse IgG. [Lot No. 628C5a-1]



Immunostaining analysis in HeLa cells. HeLa cells were fixed with 4% paraformaldehyde and permeabilized with 0.1% Triton X-100 in PBS. The cells were immunostained with anti-BTF3 mAb. [Lot No. 628C5a-1]