



**COSMO BIO Co., LTD.**  
Inspiration for Life Science

## Cosmo Bio Co., Ltd

TOYO EKIMAE BLDG, 2-20, TOYO 2CHOME,  
KOTO-KU, TOKYO 135-0016, JAPAN  
TEL : +81-3-5632-9617  
FAX : +81-3-5632-9618  
URL : <http://www.cosmobio.co.jp/>  
e-mail : [export@cosmobio.co.jp](mailto:export@cosmobio.co.jp)

### 国内連絡先

TEL : 03-5632-9610  
FAX : 03-5632-9619

## Catalog No. CBX00161

Mouse monoclonal antibody

**Anti-Human CBP**

### ■ Formulation

Mouse monoclonal anti-human **CBP** antibody in PBS (3.0 mM KCl, 1.5 mM  $\text{KH}_2\text{PO}_4$ , 140 mM NaCl, 8.0 mM  $\text{Na}_2\text{HPO}_4$  (pH 7.4)) containing 1% bovine serum albumin (BSA) and 0.05% sodium azide ( $\text{NaN}_3$ ).

### ■ Antibody concentration

100  $\mu\text{g/ml}$

### ■ Storage

Store at 2-8°C for up to one year.  
We recommend storing at -20°C for long-term storage.  
Avoid repeat freezing and thawing cycles.

### ■ Preparation

This antibody was purified using protein G column chromatography from culture supernatant of hybridoma cultured in a medium containing bovine IgG-depleted (approximately 95%) fetal bovine serum.

### ■ Sterility

0.22  $\mu\text{m}$  membrane

### ■ Applications

WB, IP, IC, Dot Blot

### ■ Disposal

This antibody solution contains sodium azide ( $\text{NaN}_3$ ) as a preservative. There is a potential hazard that  $\text{NaN}_3$  reacts with copper or lead to produce an explosive compound. For safe disposal, the vial has to be washed thoroughly with water.

### ■ Safety warnings and precautions

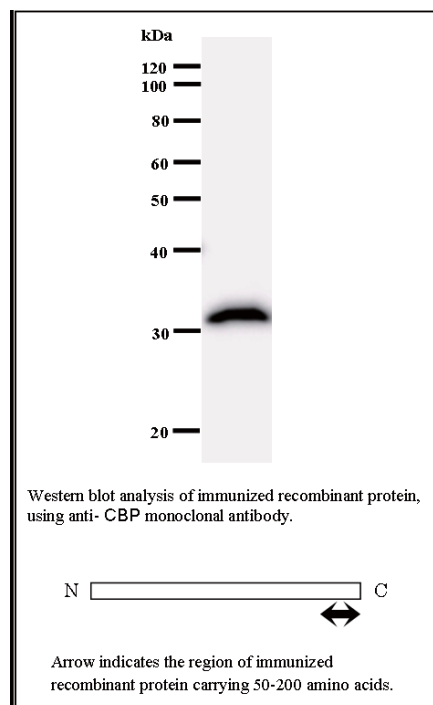
Caution must be taken to avoid contact with skin or eyes. In such a case, rinse thoroughly at once with water. Do not ingest, inhale, or swallow. Seek medical attention immediately.  
Wear appropriate protective clothing such as laboratory overalls, safety glasses and gloves.  
It is strongly advised that this product should be handled by people who have been well trained in laboratory techniques and that it is handled with care pursuant to the principles of good laboratory practice. All chemicals are deemed potentially harmful.  
The vial is prone to fall over. Use caution, especially when the lid is off.

Lot No. **CBP5I001-2**

Clone No. **CBP5I001**

Antibody class : **IgG1**

Immunogen : **Recombinant**



FOR RESEARCH USE ONLY, NOT FOR USE IN DIAGNOSTIC PROCEDURES.

manufactured by BMR



Catalog No. **CBX00161**

## Mouse monoclonal antibody **Anti-Human CBP**

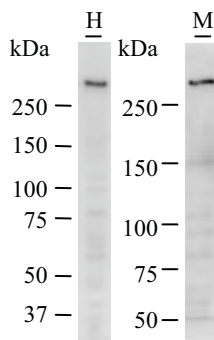
### ■ Background

Acetyltransferase enzyme. Acetylates histones, giving a specific tag for transcriptional activation. Also acetylates non-histone proteins, like NCOA3 coactivator. Mediates cAMP-gene regulation by binding specifically to phosphorylated CREB protein. CREBBP, as coactivator, augments the activity of phosphorylated CREB to activate transcription of cAMP-responsive genes. [UniProtKB Function]

### ■ Recommended condition

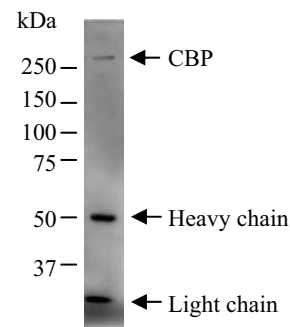
WB: 0.2-2 µg/ml IP: 100-500 µg/sample IC: 2 -100 µg/ml

### ■ Application

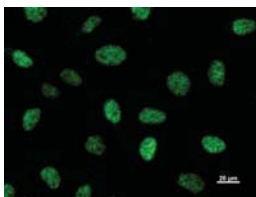


Detection of CBP by Western blot.  
Samples: Whole cell lysate from human HeLa (H, 50 µg) and mouse NIH3T3 (M, 50 µg) cells. [Lot No. CBP5I001-1]

Predicted molecular weight: 265 kDa



Immunoprecipitation: RIPA lysate of HeLa cells was incubated with anti-CBP mAb. [Lot No. CBP5I001-1]



Immunostaining analysis in HeLa cells. HeLa cells were fixed with 4% paraformaldehyde and permeabilized with 0.1% Triton X-100 in PBS. The cells were immunostained with anti-CBP mAb. [Lot No. CBP5I001-1]