



## MONOCLONAL ANTIBODY

**Catalog No. YCU-MK-BA01**

# Anti A $\beta$

<b>Product type</b>	Primary antibodies
<b>Host</b>	Mouse
<b>Source</b>	
<b>Form</b>	Liquid PBS (pH7.2) with 0.02% NaN <sub>3</sub> as a preservative
<b>Volume</b>	100 $\mu$ l
<b>(Concentration)</b>	(1.0 mg/ml)
<b>Specificity</b>	Recognizes A $\beta$ <sub>1-16</sub> , A $\beta$ <sub>1-40/42</sub> and $\beta$ -amyloid precursor proteins (APPs).
<b>Antigen</b>	Human A $\beta$ ( $\beta$ -amyloid) A synthesized peptide corresponding to amino acid residues 1-40.
<b>Clone</b>	59
<b>Isotype</b>	

**Application notes** WB (Not tested in other applications.)

### Recommended use

### Recommended dilutions

Western blotting, 1/1000 - 1/2000

Predicted molecular weight: 4 kDa for A $\beta$ <sub>1-40/42</sub> and 105kDa for soluble APP (sAPP).

Optimal dilutions/concentrations should be determined by the end user.

### Staining Pattern

**Cross reactivity** Reacts with human antigen. Not tested for other species.

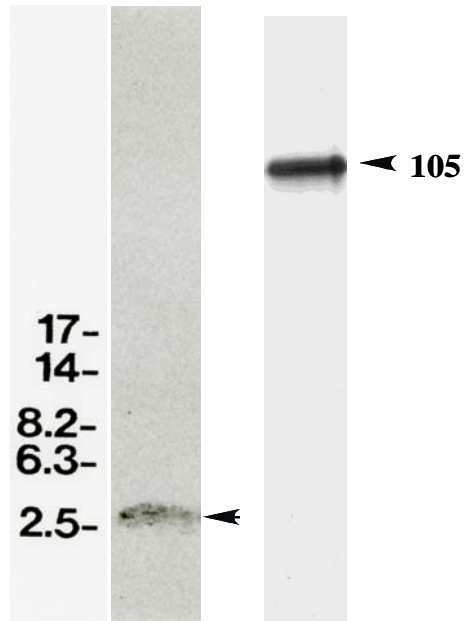
**Storage** Store below -20°C (below -70°C for prolonged storage).

Aliquot to avoid cycles of freeze/thaw.

### References

- 1) Higashi, S. and Miyazaki, K.: Novel processing of  $\beta$ -amyloid precursor protein catalyzed by membrane type 1 matrix metalloproteinase releases a fragment lacking the inhibitor domain against gelatinase A. *Biochemistry*, 42: 6514-6526, 2003
- 2) Higashi, S., Miyazaki, K.: Identification of a region of beta-amyloid precursor protein essential for its gelatinase A inhibitory activity. *J Biol Chem*. 278(16): 14020-14028, 2003
- 3) Miyata, S., Koshikawa, N., Higashi, S., Miyagi, Y., Nagashima, Y., Yanoma, S., Kato, Y., Yasumitsu H., Miyazaki, K.: Expression of trypsin in human cancer cell lines and cancer tissues and its tight binding to soluble form of Alzheimer amyloid precursor protein in culture. *J Biochem*. 125(6): 1067-1076, 1999
- 4) Koshikawa, N., Nakamura, T., Tsuchiya, N., Isaji, M., Yasumitsu, H., Umeda, M., Miyazaki, K.: Purification and identification of a novel and four known serine proteinase inhibitors secreted by human glioblastoma cells. *J Biochem*. 119(2): 334-339, 1996

*For research use only. Not for clinical diagnosis.*



Western Blot Analysis for 0.2 $\mu$ g of Synthetic A $\beta$  Peptide (left) and extracted supernatant of Human Fibrosarcoma Cell Line HT1080 (right).



COSMO BIO Co., LTD.

Inspiration for Life Science

TOYO 2CHOME, KOTO-KU, TOKYO, 135-0016, JAPAN

URL: <http://www.cosmobio.co.jp>

e-mail: [export@cosmobio.co.jp](mailto:export@cosmobio.co.jp)

[Outside Japan] Phone : +81-3-5632-9617

[国内連絡先] Phone : +81-3-5632-9610

FAX : +81-3-5632-9618

FAX : +81-3-5632-9619