



MONOCLONAL ANTIBODY

For research use only. Not for clinical diagnosis.

Catalog No. TSS-M01

Anti CRF21

BACKGROUND

This protein is encoded by the gene (C7orf24) existent in open reading frame24 of the 7th chromosome and is called CRF21 (cytochrome c-releasing factor), γ -glutamylcyclotransferase (an essential enzyme for the γ -glutamyl cycle), or U7 (highly expressed in a variety of carcinoma cells).

Product type	Monoclonal antibodies
Host	Mouse
Source	Purified Ascites
Form	Liquid
Volume	100ug
Concentration	1mg/ml
Specificity	human C7orf24 protein
Antigen	Recombinant human C7orf24 protein
Isotype	IgG1 Clone:6-1E

Application notes WB, IHC

Recommended use

Recommended dilutions

Western blotting 0.2ug/ml
Immunohistochemistry, 40ug/ml

Optimal dilutions/concentrations should be determined by the end user.

Cross reactivity React with human. Do not cross react with mouse. Not test for other species.

Storage Store at 4°C

References

- 1) Masuda Y, et.al: A novel 21-kDa cytochrome c-releasing factor is generated upon treatment of human leukemia U937 cells with geranylgeraniol. *Biochem Biophys Res Commun* 28;346:454-60, . 2006
- 2) Kageyama S, et al : A novel tumor-related protein, C7orf24, identified by proteome differential display of bladder urothelial carcinoma. *Proteomics Clin Appl* 1:192-199, 2007
- 3) Oakley AJ, et al: The identification and structural characterization of C7orf24 as gamma-glutamyl cyclotransferase. An essential enzyme in the gamma-glutamyl cycle. *J Biol Chem* 283:22031-42. 2008

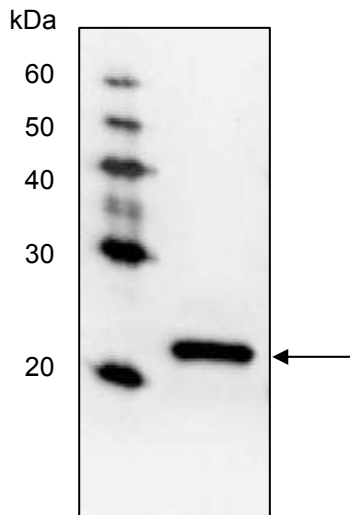


Fig.1 Western Blot analysis

Sample : Bladder cancer tissue lysate with anti CRF21 antibody.

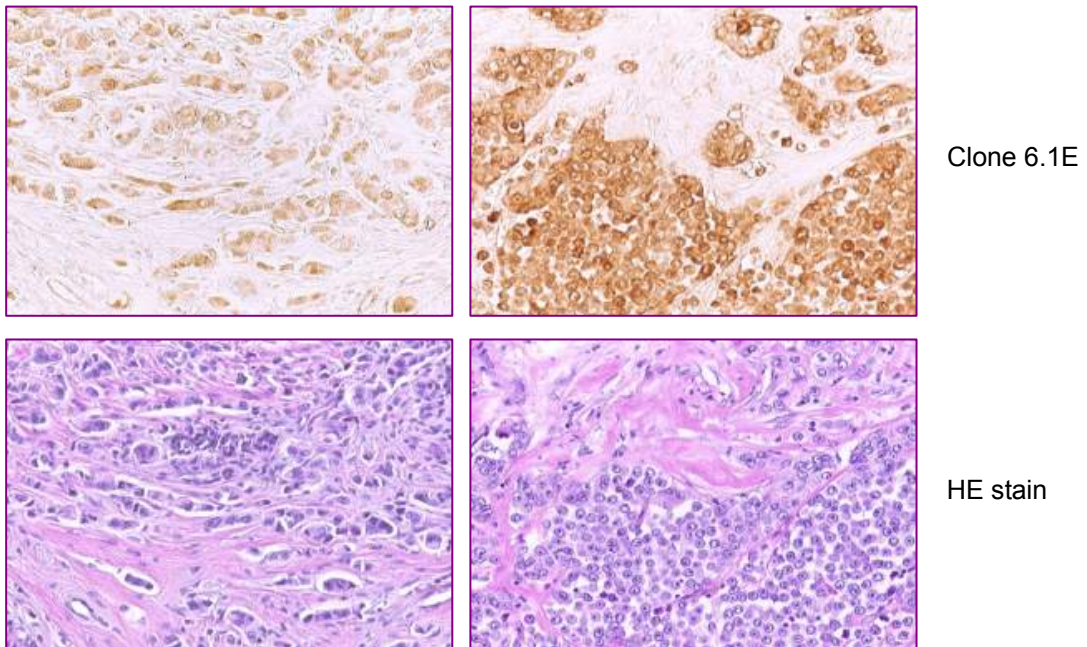


Fig.2

Immunohistochemical analysis of human breast cancer using anti CRF21(Clone 6.1E) and HE stain

For research use only. Not for clinical diagnosis.



COSMO BIO Co., LTD.

Inspiration for Life Science

TOYO 2CHOME, KOTO-KU, TOKYO, 135-0016, JAPAN

URL: <http://www.cosmobio.co.jp>

e-mail: export@cosmobio.co.jp

[Outside Japan] Phone : +81-3-5632-9617

[国内連絡先] Phone : +81-3-5632-9610

FAX : +81-3-5632-9618

FAX : +81-3-5632-9619