



POLYCLONAL ANTIBODY

Catalog No. TMD-PH-AT5

Anti-Atg5

Product type	Primary antibodies
Host	Rabbit
Source	Serum
Form	Liquid PBS (pH7.4) with 0.1% NaN ₃ as a preservative.
Volume	100ul
Concentration	
Specificity	Atg5
Antigen	Human Atg5 recombinant protein
Isotype	IgG

Application notes WB IHC, IP, ELISA, FC : not tested

Recommended use

Recommended dilutions

Western Blot: 1/1,000-1/2,000.

Predicted molecular weight: 55 kDa (detected as an Atg12-Atg5 conjugate)

Optimal dilutions/concentrations should be determined by the end user.

Staining Pattern

Cross reactivity Human, Rat, Mouse

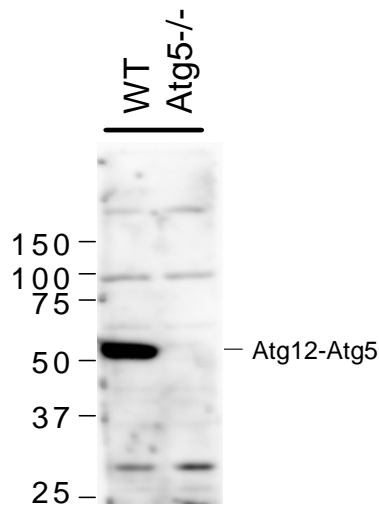
Storage Store at -20°C (below -70°C for prolonged storage).

Aliquot to avoid cycles of freeze/thaw.

References

Mizushima, N., Yamamoto, A., Hatano, M., Kobayashi, Y., Kabeya, Y., Suzuki, K., Tokuhiisa, T., Ohsumi, Y. and Yoshimori, T. Dissection of Autophagosome Formation using Apg5-Deficient Mouse Embryonic Stem Cells *J. Cell Biol.* 152, 657-667. (2001)

For research use only. Not for clinical diagnosis.



Total cell lysates were prepared from wild-type (Atg5^{+/+}) and Atg5^{-/-} mouse embryonic fibroblasts and subjected to immunoblotting with anti-Atg5 antibody (1:2,000). Note that almost all Atg5 is conjugated with Atg12 and Atg5 monomer is not detected.



COSMO BIO Co., LTD.

Inspiration for Life Science

TOYO 2CHOME, KOTO-KU, TOKYO, 135-0016, JAPAN

URL: <http://www.cosmobio.co.jp>

e-mail: export@cosmobio.co.jp

[Outside Japan] Phone : +81-3-5632-9617

[国内連絡先] Phone : +81-3-5632-9610

FAX : +81-3-5632-9618

FAX : +81-3-5632-9619