



**POLYCLONAL ANTIBODY**

**Catalog No. TMD-PH-AT16**

# Anti-Atg16

<b>Product type</b>	Primary antibodies
<b>Host</b>	Rabbit
<b>Source</b>	Serum
<b>Form</b>	Liquid PBS (pH7.4) with 0.1% NaN <sub>3</sub> as a preservative.
<b>Volume</b>	100ul
<b>Concentration</b>	
<b>Specificity</b>	Atg16
<b>Antigen</b>	Mouse Atg16L recombinant protein
<b>Isotype</b>	IgG

**Application notes** WB, IHC IP, ELISA, FC : not tested

**Recommended use**

**Recommended dilutions**

- Western Blot: 1/1,000-1/2,000.
- Predicted molecular weight: 63, 71, 75 kDa ( $\alpha$ ,  $\beta$ ,  $\gamma$  isoforms)
- Immunohistochemistry: 1/100-1/200

Optimal dilutions/concentrations should be determined by the end user.

**Staining Pattern**

**Cross reactivity** Human, Rat, Mouse

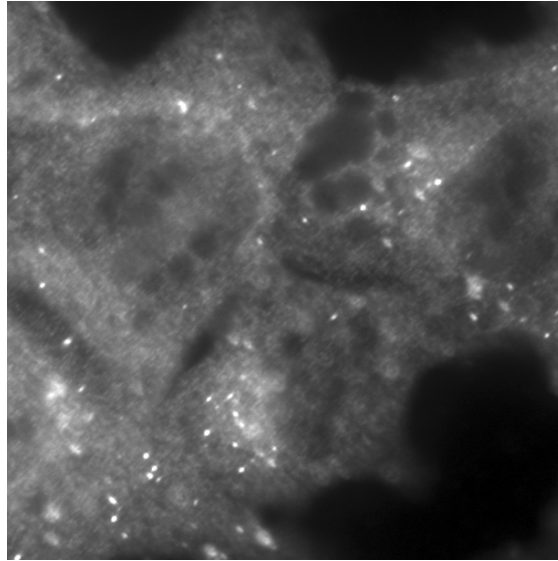
**Storage** Store at -20°C (below -70°C for prolonged storage).

Aliquot to avoid cycles of freeze/thaw.

**References**

Mizushima, N., Kuma, A., Kobayashi, Y., Yamamoto, A., Matsubae, M., Takao, T., Natsume, T., Ohsumi, Y. and Yoshimori, T. Mouse Apg16L, a novel WD-repeat protein, targets to the autophagic isolation membrane with the Apg12-Apg5 conjugate. *J. Cell Sci.* 116, 1679-1688. (2003)

*For research use only. Not for clinical diagnosis.*



Mouse embryonic fibroblasts cultured in the absence of serum and amino acids for 2 hours were subjected to immunocytochemistry using anti-Atg16L antibody (p63C2, 1:200) and a secondary antibody (Alexa fluoro 488-conjugated goat anti-rabbit IgG).



COSMO BIO Co., LTD.

Inspiration for Life Science

TOYO 2CHOME, KOTO-KU, TOKYO, 135-0016, JAPAN

URL: <http://www.cosmobio.co.jp>

e-mail: [export@cosmobio.co.jp](mailto:export@cosmobio.co.jp)

[Outside Japan] Phone : +81-3-5632-9617

[国内連絡先] Phone : +81-3-5632-9610

FAX : +81-3-5632-9618

FAX : +81-3-5632-9619