



**POLYCLONAL ANTIBODY**

**Catalog No. TMD-PH-AT12**

# Anti-Atg12

<b>Product type</b>	Primary antibodies
<b>Host</b>	Rabbit
<b>Source</b>	Serum
<b>Form</b>	Liquid PBS (pH7.4) with 0.1% NaN <sub>3</sub> as a preservative.
<b>Volume</b>	100ul
<b>Concentration</b>	
<b>Specificity</b>	Atg12
<b>Antigen</b>	N-terminal peptide of mouse Atg12
<b>Isotype</b>	IgG

**Application notes** WB IP, ELISA, FC: not tested

**Recommended use**

**Recommended dilutions**

- Western Blot: 1/1,000-1/2,000.  
Predicted molecular weight: 55 kDa (detected as an Atg12-Atg5 conjugate)
- Immunohistochemistry: 1/100-1/200

Optimal dilutions/concentrations should be determined by the end user.

**Staining Pattern**

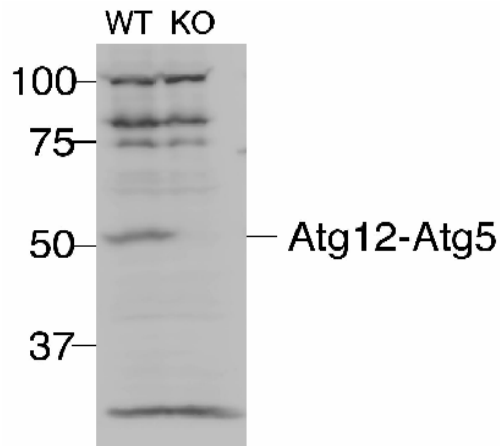
**Cross reactivity** Mouse (not react to human)

**Storage** Store at -20°C (below -70°C for prolonged storage).

Aliquot to avoid cycles of freeze/thaw.

**References** Mizushima, N., Yamamoto, A., Hatano, M., Kobayashi, Y., Kabeya, Y., Suzuki, K., Tokuhsa, T., Ohsumi, Y. and Yoshimori, T. Dissection of Autophagosome Formation using Apg5-Deficient Mouse Embryonic Stem Cells *J. Cell Biol.* 152, 657-667. (2001)

*For research use only. Not for clinical diagnosis.*



Total cell lysates were prepared from Atg5<sup>+/+</sup> (WT) and Atg5<sup>-/-</sup> (KO) mouse embryonic fibroblasts and subjected to immunoblotting with anti-Atg12 antibody (1:2000). Note that almost all Atg12 is conjugated with Atg5 and Atg12 monomer is not detected.



COSMO BIO Co., LTD.  
Inspiration for Life Science

TOYO 2CHOME, KOTO-KU, TOKYO, 135-0016, JAPAN

URL: <http://www.cosmobio.co.jp>

e-mail: [export@cosmobio.co.jp](mailto:export@cosmobio.co.jp)

[Outside Japan] Phone : +81-3-5632-9617

[国内連絡先] Phone : +81-3-5632-9610

FAX : +81-3-5632-9618

FAX : +81-3-5632-9619