



POLYCLONAL ANTIBODY

For research use only. Not for clinical diagnosis.

Catalog No. TIP-TD-P07

Anti TDP-43 N-terminus (3-12)

BACKGROUND

TDP-43, a heterogeneous nuclear ribonucleoprotein, was identified as a component of ubiquitin-positive and tau-negative inclusions observed in cases of frontotemporal lobar degeneration (FTLD-U) and amyotrophic lateral sclerosis (ALS). Immunochemical analyses using antibodies generated against phospho- and non-phosphopeptides of human TDP-43 revealed that abnormally phosphorylated full-length TDP-43 (45 kDa), C-terminal fragments (~25 kDa) and smearing substances are deposited as intracellular inclusions in affected regions of FTLD-U and ALS cases. These antibodies are powerful tools for biochemical and immunohistochemical analyses of neurodegenerative diseases and for evaluation of cellular or animal models of TDP-43 proteinopathy.

Product type	Primary antibodies
Host	Rabbit
Source	Serum
Form	Liquid
Volume	100 µl
Concentration	Antiserum with 0.05% NaN ₃ as a preservative.
Specificity	TDP-43
Antigen	EYIRVTEDENC TDP-43 (3-12)
Isotype	

Application notes WB, IHC, ELISA

Recommended use

Recommended dilutions

Western blotting, 1/1,000 to 1/5,000

(Predicted molecular weight)

Full-length TDP-43 at 43 kDa.

Immunohistochemistry, 1/1,000 to 1/10,000

ELISA, 1/1,000 to 1/5,000

Optimal dilutions/concentrations should be determined by the end user.

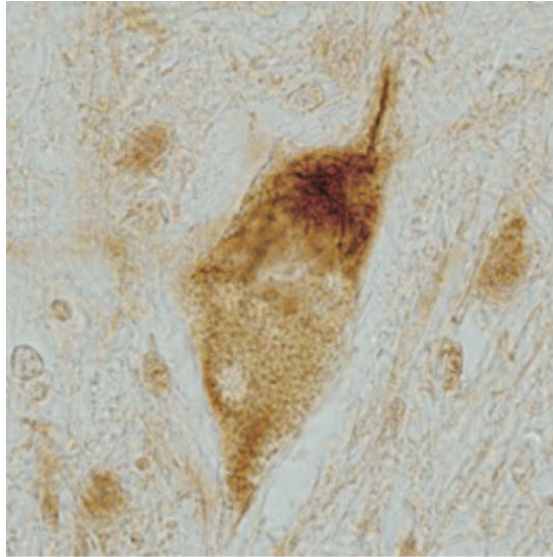
Staining Pattern

Cross reactivity Human, Rat

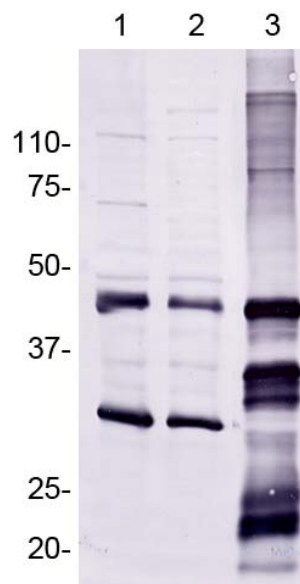
Storage Store below -20°C (below -70°C for prolonged storage).

Aliquot to avoid cycles of freeze/thaw.

References



skein-like inclusion in spinal cord of ALS



TDP43-N
(3-12)

- 1, rat brain extract
- 2, rat spinal cord extract
- 3, recombinant human TDP-43

For research use only. Not for clinical diagnosis.



COSMO BIO Co., LTD.

Inspiration for Life Science

TOYO 2CHOME, KOTO-KU, TOKYO, 135-0016, JAPAN

URL: <http://www.cosmobio.co.jp>

e-mail: export@cosmobio.co.jp

[Outside Japan] Phone : +81-3-5632-9617

[国内連絡先] Phone : +81-3-5632-9610

FAX : +81-3-5632-9618

FAX : +81-3-5632-9619