



POLYCLONAL ANTIBODY

For research use only. Not for clinical diagnosis.

Catalog No. TIP-PTD-P03

Anti phospho TDP-43 (pS409)

BACKGROUND

TDP-43, a heterogeneous nuclear ribonucleoprotein, was identified as a component of ubiquitin-positive and tau-negative inclusions observed in cases of frontotemporal lobar degeneration (FTLD-U) and amyotrophic lateral sclerosis (ALS). Immunochemical analyses using antibodies generated against phospho- and non-phosphopeptides of human TDP-43 revealed that abnormally phosphorylated full-length TDP-43 (45 kDa), C-terminal fragments (~25 kDa) and smearing substances are deposited as intracellular inclusions in affected regions of FTLD-U and ALS cases. These antibodies are powerful tools for biochemical and immunohistochemical analyses of neurodegenerative diseases and for evaluation of cellular or animal models of TDP-43 proteinopathy.

Product type	Primary antibodies
Host	Rabbit
Source	Serum
Form	Liquid
Volume	100 µl
Concentration	Antiserum with 0.05% NaN ₃ as a preservative.
Specificity	Phospho TDP-43
Antigen	CMDSKS(p)SGWGM, S(p):phosphoserine 409
Isotype	

Application notes WB, IHC, ELISA
Recommended use

Recommended dilutions

Western blotting, 1/1,000 to 1/5,000
(Predicted molecular weight)

Phosphorylated full-length TDP-43 at 45 kDa, non-phosphorylated TDP-43 at 43 kDa, ~25 kDa fragments and smearing substances in FTLD-U, ALS.

Immunohistochemistry, 1/1,000 to 1/5,000

ELISA, 1/1,000 to 1/5,000

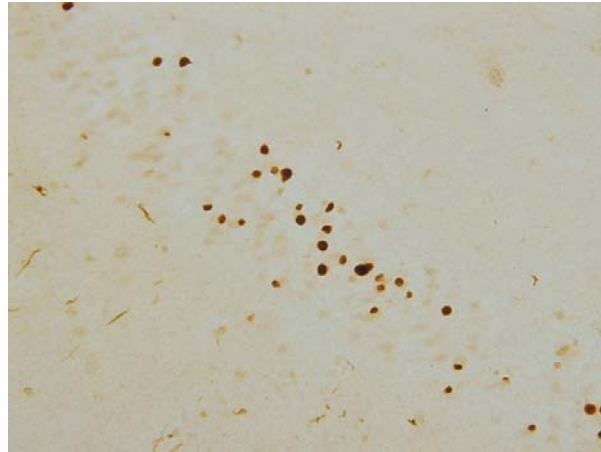
Optimal dilutions/concentrations should be determined by the end user.

Staining Pattern

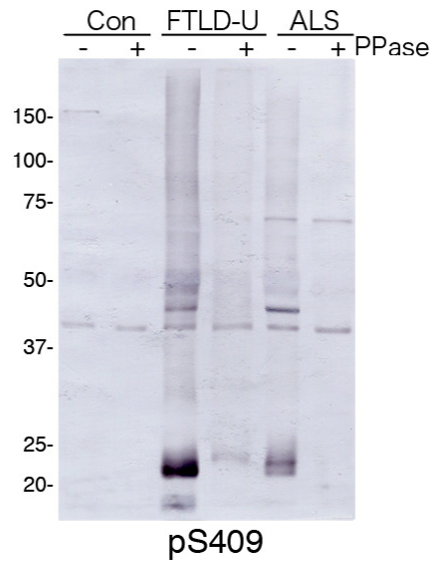
Cross reactivity Human

Storage Store below -20°C (below -70°C for prolonged storage).
Aliquot to avoid cycles of freeze/thaw.

References 1) Hasegawa M, Arai T, Nonaka T, Kametani F, Yoshida M, Hashizume Y, Beach TG, Buratti E, Baralle F, Morita M, Nakano I, Oda T, Tsuchiya K, Akiyama H. Phosphorylated TDP-43 in frontotemporal lobar degeneration and amyotrophic lateral sclerosis. *Ann Neurol*. 2008 Jun 10;64(1):60-70.



NCIs and DNPs in dentate gyrus of FTL-D-U



For research use only. Not for clinical diagnosis.



COSMO BIO Co., LTD.

Inspiration for Life Science

TOYO 2CHOME, KOTO-KU, TOKYO, 135-0016, JAPAN

URL: <http://www.cosmobio.co.jp>

e-mail: export@cosmobio.co.jp

[Outside Japan] Phone : +81-3-5632-9617

[国内連絡先] Phone : +81-3-5632-9610

FAX : +81-3-5632-9618

FAX : +81-3-5632-9619