



POLYCLONAL ANTIBODY

Catalog No. THU-A-TLR9

Anti porcine TLR9

Product type	Primary antibodies
Host	Rabbit
Source	
Form	Liquid PBS (pH7.4) with 0.1% NaN ₃ as a preservative Immunogen affinity purified
Volume	50 ul
Concentration	0.83 mg/ml
Specificity	Porcine TLR9
Antigen	Amino acids 267-283 of porcine Toll like receptor 9
Isotype	IgG

Application notes WB, IHC, IP, ELISA, FC

Recommended use

Recommended dilutions

Western Blot: 1/500-1/1,000. Predicted molecular weight: 113kDa a

Immunohistochemistry: 1/1,000-1/2,000

Immunoprecipitation: 1/100-1/500

ELISA: 1/1,000

Flow cytometry: 1/1,000

Optimal dilutions/concentrations should be determined by the end user.

Staining Pattern

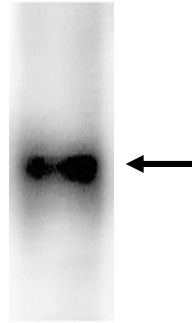
Cross reactivity Reacts with porcine. Not yet tested in other species.

Storage Store below -20°C (below -70°C for prolonged storage). Aliquot to avoid cycles of freeze/thaw.

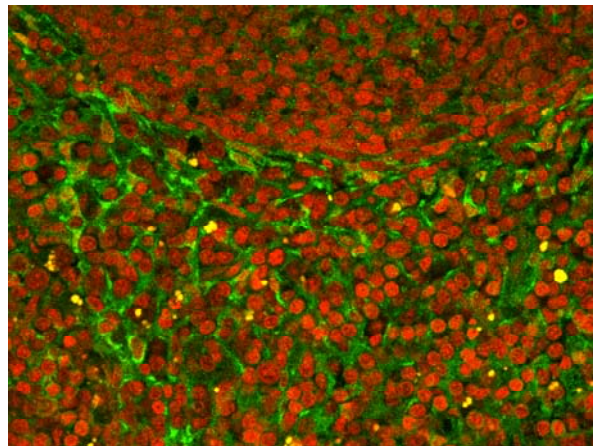
References 1) Shimosato, T., H. Kitazawa, S. Kato, R. Karima, Y. Tomioka, Y. Kawai, T. Hishinuma, S. Ueha, K. Matsushima and T. Saito: Swine Toll-like receptor 9 recognizes CpG motifs of human cell stimulant. *Biochim. Biophys. Acta*, 1627, 56-61 (2003).

2) Shimosato, T, M. Tohno, H. Kitazawa, S. Katoh, K. Watanabe, Y. Kawai, H. Aso, T. Yamaguchi and T. Saito: Toll-like receptor 9 is expressed on follicle-associated epithelia containing M cells in swine Peyer's patches. *Immunol Lett.*, 98, 83-89 (2005).

For research use only. Not for clinical diagnosis.



Western blot analysis of TLR9 protein expressed in mesenteric lymph nodes of adult porcine.



Localization of TLR9 in longitudinal section of Peyer's patches of adult porcine.
Green: TLR9
Red: nuclei



COSMO BIO Co., LTD.

Inspiration for Life Science

TOYO 2CHOME, KOTO-KU, TOKYO, 135-0016, JAPAN

URL: <http://www.cosmobio.co.jp>

e-mail: export@cosmobio.co.jp

[Outside Japan] Phone : +81-3-5632-9617

[国内連絡先] Phone : +81-3-5632-9610

FAX : +81-3-5632-9618

FAX : +81-3-5632-9619