



Anti porcine TLR2

Product type	Primary antibodies
Host	Rabbit
Source	Serum
Form	Liquid PBS (pH7.4) with 0.1% NaN ₃ as a preservative Immunogen affinity purified
Volume	50 ul
Concentration	0.61 mg/ml
Specificity	porcine TLR2
Antigen	Amino acids 76-90 of porcine Toll like receptor 2
Isotype	IgG

Application notes WB, IHC, IP, ELISA, FC

Recommended use

Recommended dilutions

Western Blot: 1/500-1/1,000. Predicted molecular weight: 87kDa

Immunohistochemistry: 1/500-1/1,000

Immunoprecipitation: 1/100-1/500

ELISA: 1/1,000

Flow cytometry: 1/1,000

Optimal dilutions/concentrations should be determined by the end user.

Staining Pattern

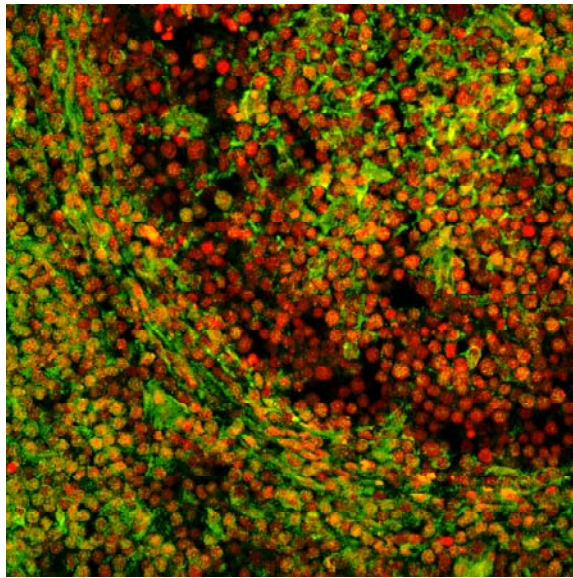
Cross reactivity Reacts with porcine. Not yet tested in other species.

Storage Store below -20°C (below -70°C for prolonged storage). Aliquot to avoid cycles of freeze/thaw.

- References**
- 1) Tohno, M, H. Kitazawa, T. Shimosato, M. Matsumoto, S. Katoh, Y. Kawai and T. Saito : A swine Toll-like receptor 2-expressing transfectant as a potential primary screening system for immunobiotic microorganisms. FEMS immunol. Med. Microbiol., 44, 283-288 (2005).
 - 2) Tohno, M, T. Shimosato, H. Kitazawa, S. Katoh, I.D. Ilikeve, T. Kimura, Y. Kawai, K. Watanabe, H. Aso, T. Yamaguchi and T. Saito: Toll-like receptor 2 is expressed on the intestinal M cells in swine. Biochem. Biophys. Res. Commun., 330:547-554 (2005).



Western blot analysis of TLR2 protein expressed in mesenteric lymph nodes of adult porcine.



Localization of TLR2 in longitudinal section of mesenteric lymph nodes of adult porcine.
Green: TLR2
Red: nuclei

For research use only. Not for clinical diagnosis.



COSMO BIO Co., LTD.
Inspiration for Life Science

TOYO 2CHOME, KOTO-KU, TOKYO, 135-0016, JAPAN

URL: <http://www.cosmobio.co.jp>

e-mail: export@cosmobio.co.jp

[Outside Japan] Phone : +81-3-5632-9617

[国内連絡先] Phone : +81-3-5632-9610

FAX : +81-3-5632-9618

FAX : +81-3-5632-9619