



POLYCLONAL ANTIBODY

Catalog No. THU-A-TLR2

Anti porcine TLR2

Product type	Primary antibodies
Host	Rabbit
Source	
Form	Liquid PBS (pH7.4) with 0.1% NaN ₃ as a preservative Immunogen affinity purified
Volume	50 ul
Concentration	0.61 mg/ml
Specificity	porcine TLR2
Antigen	Amino acids 76-90 of porcine Toll like receptor 2
Isotype	IgG

Application notes WB, IHC, IP, ELISA, FC
Recommended use

Recommended dilutions

Western Blot: 1/500-1/1,000. Predicted molecular weight: 87kDa
Immunohistochemistry: 1/500-1/1,000
Immunoprecipitation: 1/100-1/500
ELISA: 1/1,000
Flow cytometry: 1/1,000

Optimal dilutions/concentrations should be determined by the end user.

Staining Pattern

Cross reactivity Reacts with porcine. Not yet tested in other species.

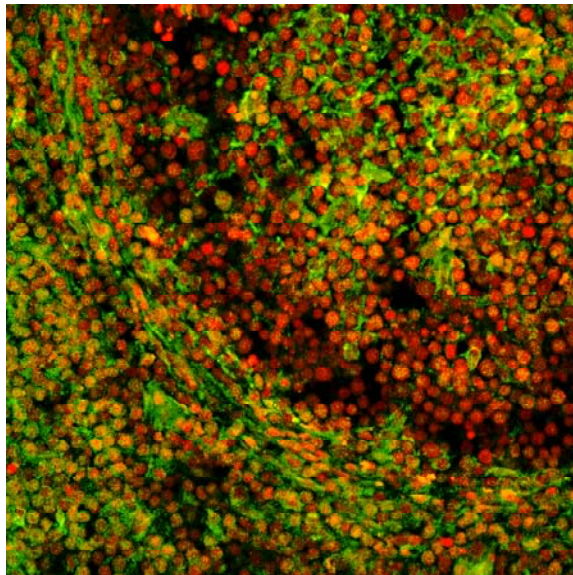
Storage Store below -20°C (below -70°C for prolonged storage). Aliquot to avoid cycles of freeze/thaw.

- References**
- 1) Tohno, M, H. Kitazawa, T. Shimosato, M. Matsumoto, S. Katoh, Y. Kawai and T. Saito : A swine Toll-like receptor 2-expressing transfectant as a potential primary screening system for immunobiotic microorganisms. FEMS immunol. Med. Microbiol., 44, 283-288 (2005).
 - 2) Tohno, M, T. Shimosato, H. Kitazawa, S. Katoh, I.D. Ilieve, T. Kimura, Y. Kawai, K. Watanabe, H. Aso, T. Yamaguchi and T. Saito: Toll-like receptor 2 is expressed on the intestinal M cells in swine. Biochem. Biophys. Res. Commun., 330:547-554 (2005).

For research use only. Not for clinical diagnosis.



Western blot analysis of TLR2 protein expressed in mesenteric lymph nodes of adult porcine.



Localization of TLR2 in longitudinal section of mesenteric lymph nodes of adult porcine.
Green: TLR2
Red: nuclei

