

Anti Collagen 7 monoclonal antibody

Catalog No. CAC-NU-01-CO7

Lot number	991008
Clone number	BML39
Host animal	Mouse
Immunogen	Native type-VII collagen from bovine cornea
Purity	Tissue culture supernatant
Isotype / Light chain type	IgG1k
Volume	500 µl
Formulation	Hybridoma supernatant with 0.02% NaN ₃ as a preservative.
Cross Reactivity	Human, Rabbit, Bovine, Porcine (No cross-react: mouse, rat)
Specificity	No reactivity against other type collagens.
Application/ Recommended concentration	<ul style="list-style-type: none">• Western Blot: Use at an assay dependant dilution. Recognizes a band at approximately 300 kDa and degraded fragments around 170 kDa.• Immunofluorescence: 1:100 for staining of acetone-fixed cryostat tissue sections.• Immunoprecipitation: Use at an assay dependant dilution. Not tested yet in other applications. <p style="text-align: center;">Optimal working dilutions must be determined by end user.</p>
Storage	Store below -20°C (below -70°C for prolonged storage). Aliquot to avoid cycles of freeze/thaw.
Reference	<ol style="list-style-type: none">1. Hirako Y., Yoshino K., Zillikens D., Owaribe K. Extracellular cleavage of bullous pemphigoid antigen 180/type XVII collagen and its involvement in hemidesmosomal disassembly. <i>J Biochem.</i> 133: 197-206 (2003)2. Uematsu J., Nishizawa Y., Hirako Y., Kitamura K., Usukura J., Miyata T., Owaribe K. Both type-I hemidesmosomes and adherens-type junctions contribute to the cell-substratum adhesion system in myoepithelial cells. <i>Eur J Cell Biol.</i> 84: 407-415 (2005)3. Owaribe K, Nishizawa Y, Franke WW. Isolation and characterization of hemidesmosomes from bovine corneal epithelial cells. <i>Exp Cell Res.</i> 192:622-630. (1991)

For research use only; not for use as a diagnostic.

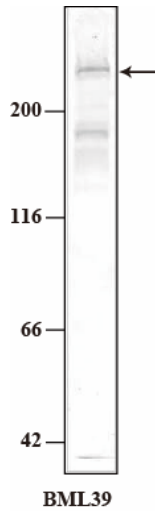


COSMO BIO CO., LTD.
Inspiration for Life Science

TOYO EKIMAE BLDG, 2-20, TOYO 2CHOME, KOTO-KU, TOKYO 135-0016, JAPAN
TEL: +81-3-5632-9617 FAX: +81-3-5632-9618 e-mail: export@cosmobio.co.jp

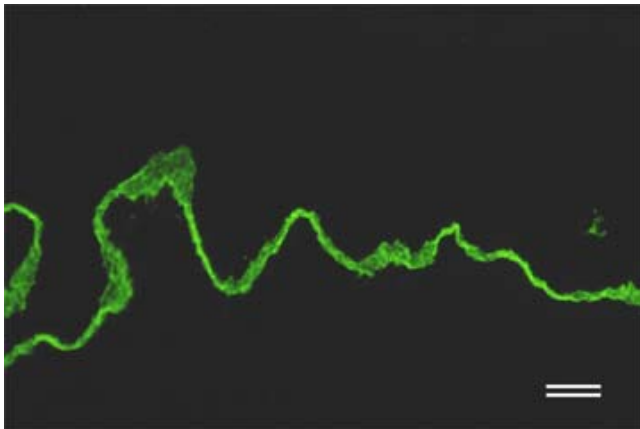
www.cosmobio.co.jp

Application data



Western Blot analysis

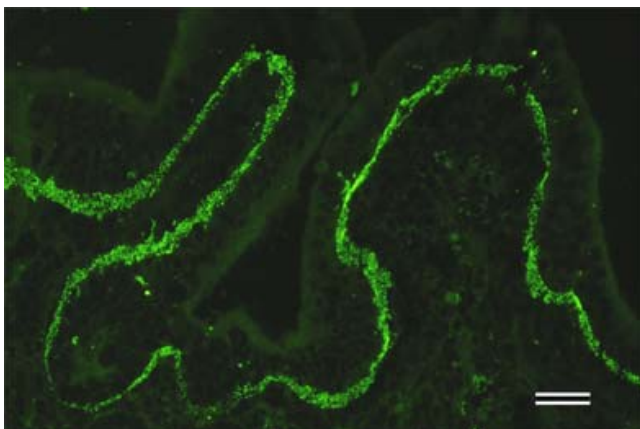
Sample: conditioned medium from BMGE+H cell
BML39 recognizes type-7 collagen as a band at approximately 300 kDa and degraded fragments around 170 kDa.



Immunofluorescence (×20)

Human skin was analyzed by immunofluorescence with BML39 (1:200).

Epidermal basal layer containing type-7 collagen is stained green. (Scale bar, 40 μm)



Immunofluorescence (×20)

Human skin was analyzed by immunofluorescence with BM515 (1:200).

Epidermal basal layer containing laminin α3 chain is stained green. (Scale bar, 40 μm)

Anti Collagen 7 monoclonal antibody

Catalog No. NU-01-CO7

Lot number	991008
Clone number	BML39
Host animal	Mouse
Immunogen	Native type-VII collagen from bovine cornea
Purity	Tissue culture supernatant
Isotype / Light chain type	IgG1k
Volume	500 μ l
Formulation	Hybridoma supernatant with 0.02% NaN ₃ as a preservative.
Cross Reactivity	Human, Rabbit, Bovine, Porcine (No cross-react: mouse, rat)
Specificity	No reactivity against other type collagens.
Application/ Recommended concentration	<ul style="list-style-type: none">• Western Blot: Use at an assay dependant dilution. Recognizes a band at approximately 300 kDa and degraded fragments around 170 kDa.• Immunofluorescence: 1:100 for staining of acetone-fixed cryostat tissue sections.• Immunoprecipitation: Use at an assay dependant dilution. Not tested yet in other applications. <p>Optimal working dilutions must be determined by end user.</p>
Storage	Store below -20°C (below -70°C for prolonged storage). Aliquot to avoid cycles of freeze/thaw.
Reference	<ol style="list-style-type: none">1. Hirako Y., Yoshino K., Zillikens D., Owaribe K. Extracellular cleavage of bullous pemphigoid antigen 180/type XVII collagen and its involvement in hemidesmosomal disassembly. <i>J Biochem.</i> 133: 197-206 (2003)2. Uematsu J., Nishizawa Y., Hirako Y., Kitamura K., Usukura J., Miyata T., Owaribe K. Both type-I hemidesmosomes and adherens-type junctions contribute to the cell-substratum adhesion system in myoepithelial cells. <i>Eur J Cell Biol.</i> 84: 407-415 (2005)3. Owaribe K, Nishizawa Y, Franke WW. Isolation and characterization of hemidesmosomes from bovine corneal epithelial cells. <i>Exp Cell Res.</i> 192:622-630. (1991)

For research use only; not for use as a diagnostic.

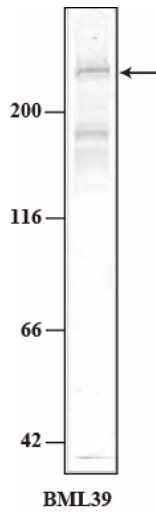
販売元:



コスモ・バイオ株式会社

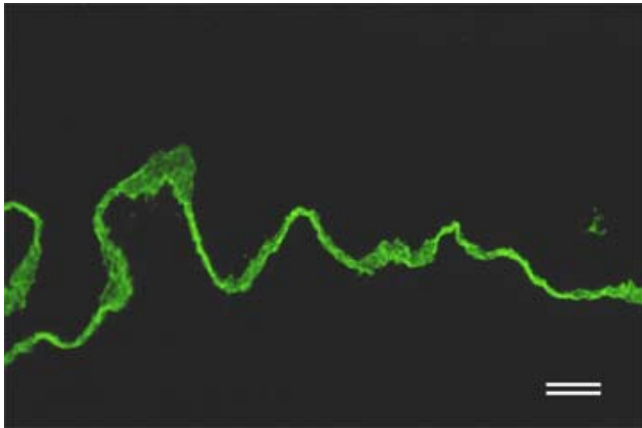
〒135-0016 東京都江東区東陽 2-2-20 東陽駅前ビル
TEL : (03) 5632-9610 FAX : (03) 5632-9619
e-mail : mail@cosmobio.co.jp
URL : http://www.cosmobio.co.jp/

Application data



ウエスタンブロット

ウシ乳腺上皮由来の株細胞である BMGE+H 細胞から得た conditioned medium を電気泳動し、抗 Collagen7・BML39 抗体で検出した。300kDa にVII型コラーゲンが、170kDa 周辺にその分解断片が検出されている。

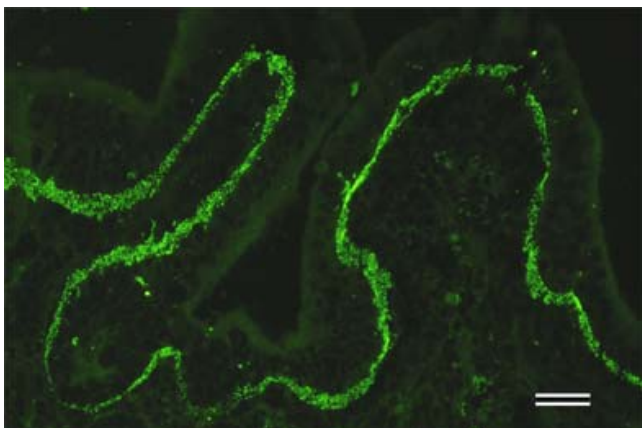


蛍光免疫染色 (×20)

ヒト皮膚を 100 倍希釈抗 Collagen7・BML39 抗体で染色した。

VII型コラーゲンを含む表皮基底膜部が緑色に染まっている。

スケールバーは 40μm



蛍光免疫染色 (×20)

ウサギ大腸を 100 倍希釈抗 Collagen 7・BML39 抗体で染色した。

VII型コラーゲンを含む大腸上皮基底膜部が緑色に染まっている。

スケールバーは 40μm