

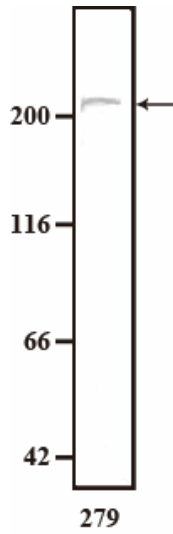
Anti BPAG1 (BP230) monoclonal antibody

Catalog No. CAC-NU-01-BP1

Lot number	070323
Clone number	279
Host animal	Mouse
Immunogen	Native BP230 from bovine cornea
Purity	Tissue culture supernatant
Isotype / Light chain type	IgG1k
Volume	500 µl
Formulation	Hybridoma supernatant with 0.02% NaN ₃ as a preservative.
Cross Reactivity	Human, Rat, Rabbit, Bovine, Porcine
Application/ Recommended concentration	<ul style="list-style-type: none">• Western Blot: Use at an assay dependant dilution. Recognizes a band at approximately 230 kDa• Immunofluorescence: 1:50 for staining of acetone-fixed cryostat tissue sections Not tested yet in other applications. <p style="text-align: center;">Optimal dilutions must be determined by end user.</p>
Storage	Store below -20°C (below -70°C for prolonged storage). Aliquot to avoid cycles of freeze/thaw.
Reference	<ol style="list-style-type: none">1. Owaribe K, Nishizawa Y, Franke WW. Isolation and characterization of hemidesmosomes from bovine corneal epithelial cells. <i>Exp Cell Res.</i> 192:622-630. (1991)2. Okumura M, Yamakawa H, Ohara O, Owaribe K. Novel alternative splicings of BPAG1 (bullous pemphigoid antigen 1) including the domain structure closely related to MACF (microtubule actin cross-linking factor). <i>J Biol Chem.</i> 277:6682-6687. (2002)3. Hirako Y, Usukura J, Uematsu J, Hashimoto T, Kitajima Y, Owaribe K. Cleavage of BP180, a 180-kDa bullous pemphigoid antigen, yields a 120-kDa collagenous extracellular polypeptide. <i>J Biol Chem.</i> 273:9711-9717. (1998)

For research use only; not for use as a diagnostic.

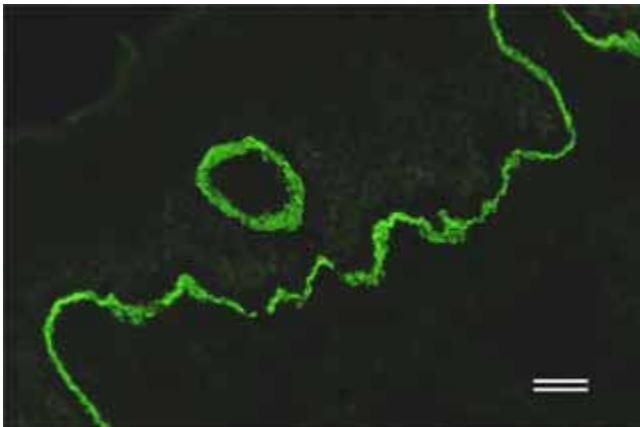
Application data



Western Blot analysis

Sample: Cell extract of DJM-1 cells

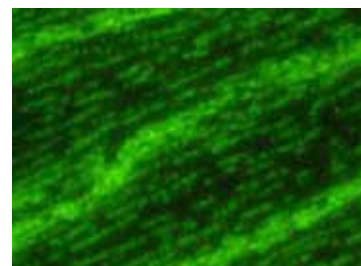
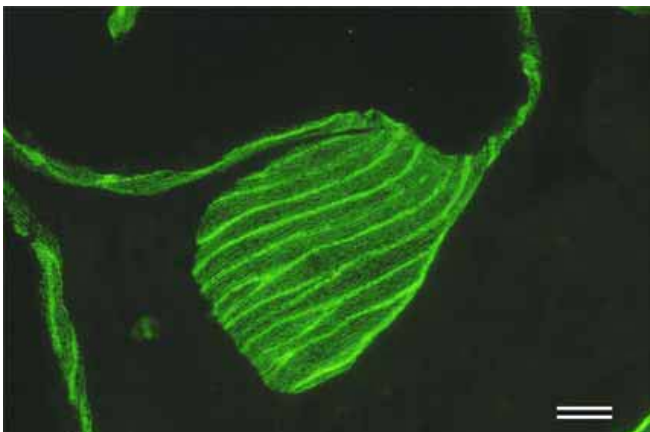
279 antibody recognized BP230 (230kDa Bullous Pemphigoid antigen) as a band at approximately 230 kDa.



Immunofluorescence ($\times 20$)

Human skin was analyzed by immunofluorescence with 279 antibody (1:50).

Epidermal basal part containing BP230 is stained green. (Scale bar, 40 μ m)



Immunofluorescence ($\times 40$)

Bovine skin apocrine gland was analyzed by immunofluorescence with 279 (1:50).

Hemidesmosomes in basal part of myoepithelial cells containing BP230 is stained green. (Scale bar, 20 μ m)

Anti BPAG1 (BP230) monoclonal antibody

Catalog No. NU-01-BP1

Lot number	070323
Clone number	279
Host animal	Mouse
Immunogen	Native BP230 from bovine cornea
Purity	Tissue culture supernatant
Isotype / Light chain type	IgG1k
Volume	500 µl
Formulation	Hybridoma supernatant with 0.02% NaN ₃ as a preservative.
Cross Reactivity	Human, Rat, Rabbit, Bovine, Porcine
Application/ Recommended concentration	<ul style="list-style-type: none">• Western Blot: Use at an assay dependant dilution. Recognizes a band at approximately 230 kDa• Immunofluorescence: 1:50 for staining of acetone-fixed cryostat tissue sections Not tested yet in other applications. <p>Optimal dilutions must be determined by end user.</p>
Storage	Store below -20°C (below -70°C for prolonged storage). Aliquot to avoid cycles of freeze/thaw.
Reference	<ol style="list-style-type: none">1. Owaribe K, Nishizawa Y, Franke WW. Isolation and characterization of hemidesmosomes from bovine corneal epithelial cells. <i>Exp Cell Res.</i> 192:622-630. (1991)2. Okumura M, Yamakawa H, Ohara O, Owaribe K. Novel alternative splicings of BPAG1 (bullous pemphigoid antigen 1) including the domain structure closely related to MACF (microtubule actin cross-linking factor). <i>J Biol Chem.</i> 277:6682-6687. (2002)3. Hirako Y, Usukura J, Uematsu J, Hashimoto T, Kitajima Y, Owaribe K. Cleavage of BP180, a 180-kDa bullous pemphigoid antigen, yields a 120-kDa collagenous extracellular polypeptide. <i>J Biol Chem.</i> 273:9711-9717. (1998)

For research use only; not for use as a diagnostic.

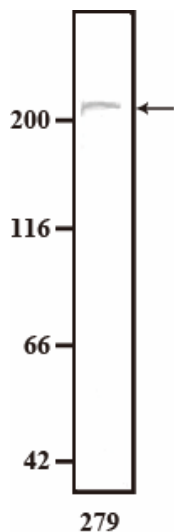
販売元:



コスモ・バイオ株式会社

〒135-0016 東京都江東区東陽 2-2-20 東陽駅前ビル
TEL : (03) 5632-9610 FAX : (03) 5632-9619
e-mail : mail@cosmobio.co.jp
URL : http://www.cosmobio.co.jp/

Application data

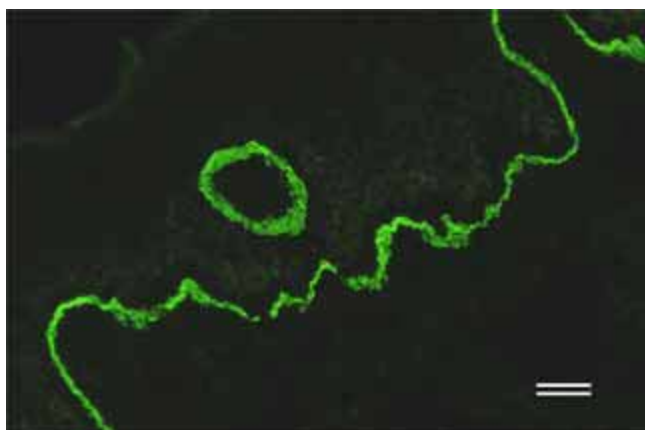


ウエスタンブロット

ヒト扁平上皮がん由来の株細胞である DJM-1 細胞の細胞抽出液を電気泳動し、抗 BPAG1 抗体 (279) で検出した。230kDa の位置に BP230 (230kDa Bullous Pemphigoid antigen) が検出されている。

Western blot

Cell lysate from human squamous-cell-carcinoma cell line (DJM-1)

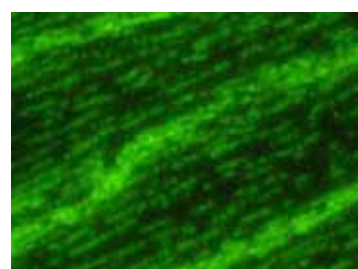
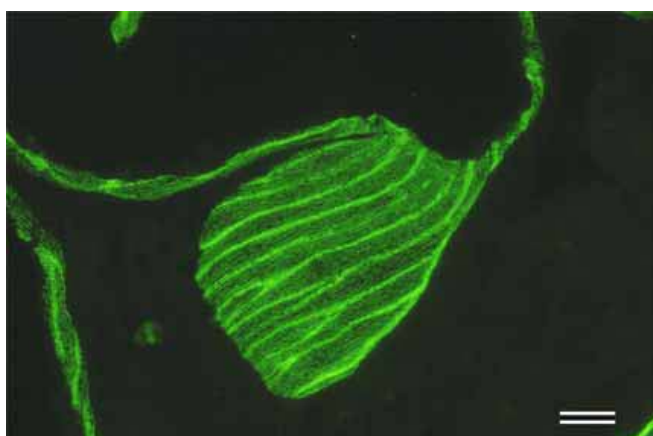


蛍光免疫染色 (×20)

ヒト皮膚を 50 倍希釈抗 BPAG1 抗体(279)で染色した。

BP230 を含む表皮基底細胞の基底部分が緑色に染まっている。

スケールバーは 40 μ m



蛍光免疫染色 (×40)

ウシ皮膚アポクリン汗腺を 50 倍希釈抗 BPAG1 抗体 (279)で染色した。

BP230 を含む筋上皮細胞基底部のヘミデズモソームが細かい点状に緑色に染まっている。

スケールバーは 20 μ m

Bovine skin apocrine gland

Basal layer

hemidesmosome