



## Anti- Germ cell

### BACKGROUND

A monoclonal antibody TRA98 recognizes a mouse testicular germ cell-specific antigen (1). In adult tissues, bands of 60-100 kDa proteins are detected only in the testis by Western blotting analysis with TRA98 (Fig. 1). The signals are observed in male and female embryos after embryonic day 12.5. The signal of male is detected during development of germ cells and then after birth, but the signal of female is disappeared by 5 days after birth. The antigen is localized only in the nuclear fraction of testicular germ cells and this antibody can be used for immunohistochemical staining of testicular (1, 2).

The hybridoma produced TRA98 obtained from the immunization with cell lysates of adult mouse testes to a rat by the Yoshitake Nishimune group of Osaka University. This product is purified from the ascitic fluid of nude mice.

|                      |  |
|----------------------|--|
| <b>Product type</b>  | Primary antibodies                                       |
| <b>Host</b>          | Mouse  |
| <b>Source</b>        | Ascites  |
| <b>Form</b>          | Liquid<br>Purified IgG (1 mg/ml) in PBS(-), 50% glycerol |
| <b>Volume</b>        | 50 µg  |
| <b>Concentration</b> | 1 mg/ml  |
| <b>Specificity</b>   | Germ cell  |
| <b>Antigen</b>       | Mouse germ cell  |
| <b>Clone</b>         | TRA98  |
| <b>Isotype</b>       | IgG2a  |

---

**Application notes** WB, IHC

#### **Recommended use**

#### **Recommended dilutions**

Optimal dilutions/concentrations should be determined by the end user.

#### **Staining Pattern**

**Cross reactivity** Human

**Storage** 4°C ( for long period, -20°C)

**References** 1) Tanaka H, et al., Int. J Androl. 20, 361-366 (1997)

2) Ohta et al., development 127, 2125-2131 (2000).

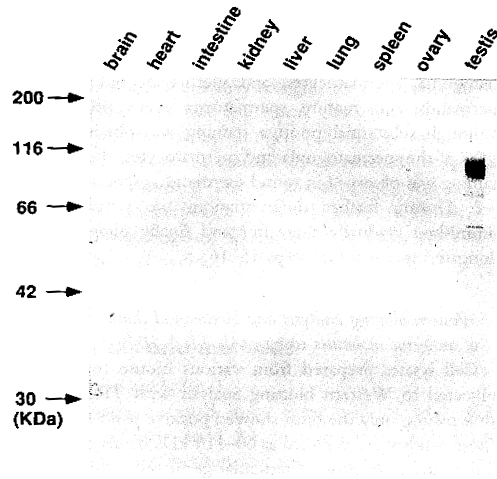


Fig. Western blotting with TRA98 using various mouse tissues.  
IgG was 5,000-fold diluted before use.

*For research use only. Not for clinical diagnosis.*

Manufactured by BioAcademia Inc.



COSMO BIO Co., LTD.  
Inspiration for Life Science

TOYO 2CHOME, KOTO-KU, TOKYO, 135-0016, JAPAN

URL: <http://www.cosmobio.co.jp>

e-mail: [export@cosmobio.co.jp](mailto:export@cosmobio.co.jp)

[Outside Japan] Phone : +81-3-5632-9617

[国内連絡先] Phone : +81-3-5632-9610

FAX : +81-3-5632-9618

FAX : +81-3-5632-9619



## 抗生殖細胞

**BACKGROUND**

TRA98 は生殖細胞特異的に発現する抗原を認識するモノクローナル抗体である (1)。

TRA98 を用いたウェスタンブロッティングでは、精巣にのみ反応し、60-100 kD の分子量のタンパク質が検出される (図1)。Embryonic day 12.5 以降の雌雄の生殖巣でシグナルがみられ雌では生後まもなく反応が消えるが、雄では発現が強くなる。抗原は生殖細胞核に強く局在し、免疫染色も可能である (1, 2)。

TRA98 は、大阪大学微生物病研究所西宗義武教授らのグループによって、マウス精巣の精巣抽出液をラットに免疫し得られたハイブリドーマより単離された (1)。

本品はハイブリドーマ TRA98 を培養し、IgG を精製したものである。

|                      |             |
|----------------------|-------------|
| <b>Product type</b>  | 一次抗体        |
| <b>Host</b>          | マウス         |
| <b>Source</b>        | 腹水          |
| <b>Form</b>          | 液状          |
| <b>Volume</b>        | 50 µg       |
| <b>Concentration</b> | 1 mg/ml     |
| <b>Specificity</b>   | 生殖細胞        |
| <b>Antigen</b>       | マウス精巣の精巣抽出液 |
| <b>Clone</b>         | TRA98       |
| <b>Isotype</b>       | IgG2a       |

**Application notes** WB, IHC

**Recommended use****Recommended dilutions**

Optimal dilutions/concentrations should be determined by the end user.

**Staining Pattern**

**Cross reactivity** ヒト

**Storage** 4°C ( 長期保存, -20°C)

**References** 1) Tanaka H, et al., Int. J Androl. 20, 361-366 (1997)

2) Ohta et al., development 127, 2125-2131 (2000).

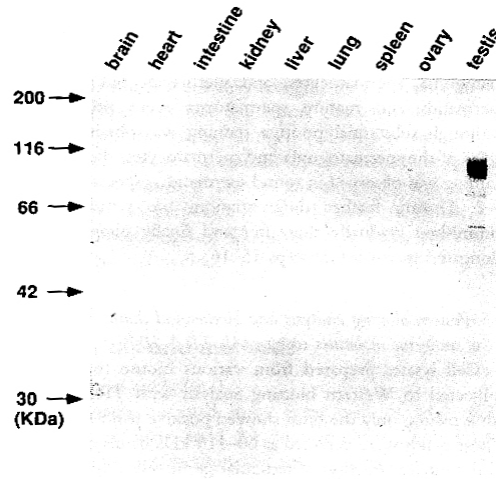


Fig. Western blotting with TRA98 using various mouse tissues.  
IgG was 5,000-fold diluted before use.

*For research use only. Not for clinical diagnosis.*

Manufactured by BioAcademia Inc.



COSMO BIO Co., LTD.

Inspiration for Life Science

TOYO 2CHOME, KOTO-KU, TOKYO, 135-0016, JAPAN

URL: <http://www.cosmobio.co.jp>

e-mail: [export@cosmobio.co.jp](mailto:export@cosmobio.co.jp)

[Outside Japan] Phone : +81-3-5632-9617

[国内連絡先] Phone : +81-3-5632-9610

FAX : +81-3-5632-9618

FAX : +81-3-5632-9619