



**MONOCLONAL ANTIBODY**

*For research use only. Not for clinical diagnosis.*

**Catalog No. 70-400**

**anti-U1 snRNP C**

**BACKGROUND**

The **spliceosomal U1C protein** is critical to the initiation and regulation of precursor messenger RNA (pre-mRNA) splicing, as part of the U1 small nuclear ribonucleoprotein particle (**snRNP**). U1C is needed for efficient complex formation of U1 snRNP with a 5' splice site.

The antibody was produced from the hybridoma cultured in serum-free medium and purified under mild conditions by propriety chromatography processes.

<b>Product type</b>	Primary antibodies
<b>Host</b>	Mouse
<b>Source</b>	Supernatant
<b>Form</b>	Liquid
<b>Volume</b>	Purified monoclonal antibody (IgG) 1mg/ml in PBS, 50% glycerol, filter-sterilized 100 µg
<b>Concentration</b>	
<b>Specificity</b>	Mouse U1C
<b>Antigen</b>	Recombinant GST-fused mouse U1C (full length)
<b>Isotype</b>	Rat IgG 2a kappa

**Application notes** WB, IHC, ELISA Other applications are not tested.

**Recommended use**

**Recommended dilutions**

Optimal dilutions/concentrations should be determined by the end user.

**Staining Pattern**

**Cross reactivity** Human, simian U1C. Other species are not tested.

**Storage** -20°C (For prolonged -70°C)

**References** Swiss-Prot Q62241

1) Muto, Y. et al. (2004) "The structure and biochemical properties of the human spliceosomal protein U1C." J Mol Biol 341: 185-198 PMID: 15312772

2) Pomeranz Krummel, D.A. et al. (2009) "Crystal structure of human spliceosomal U1 snRNP at 5.5Å resolution." Nature 458: 475-480 PMID: 19325628

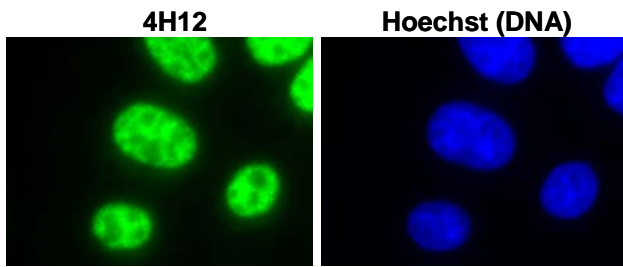


Fig.1 Immunofluorescent staining of L929 (mouse) cells with antibody 4H12.

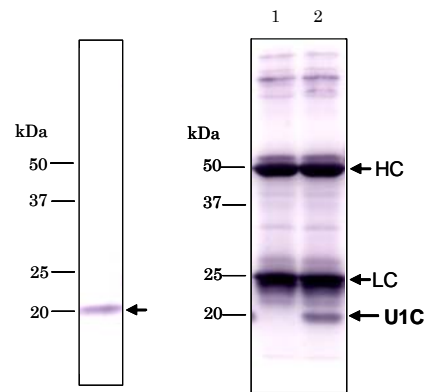


Fig.2 Detection of U1C protein in HeLa total cell extract by Western blotting with antibody 4H12.

Fig.3 Immunoprecipitation of U1C protein with 4H12. lane1: no extract lane2: HeLa total extract HC, LC ; IgG heavy & light chain

*For research use only. Not for clinical diagnosis.*

Manufactured by BioAcademia, Inc.



COSMO BIO Co., LTD.  
Inspiration for Life Science

TOYO 2CHOME, KOTO-KU, TOKYO, 135-0016, JAPAN

URL: <http://www.cosmobio.co.jp>

e-mail: [export@cosmobio.co.jp](mailto:export@cosmobio.co.jp)

[Outside Japan] Phone : +81-3-5632-9617

[国内連絡先] Phone : +81-3-5632-9610

FAX : +81-3-5632-9618

FAX : +81-3-5632-9619