

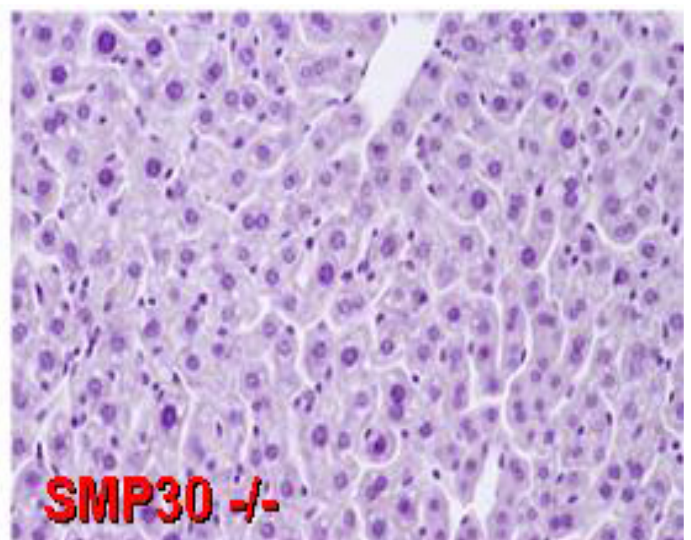
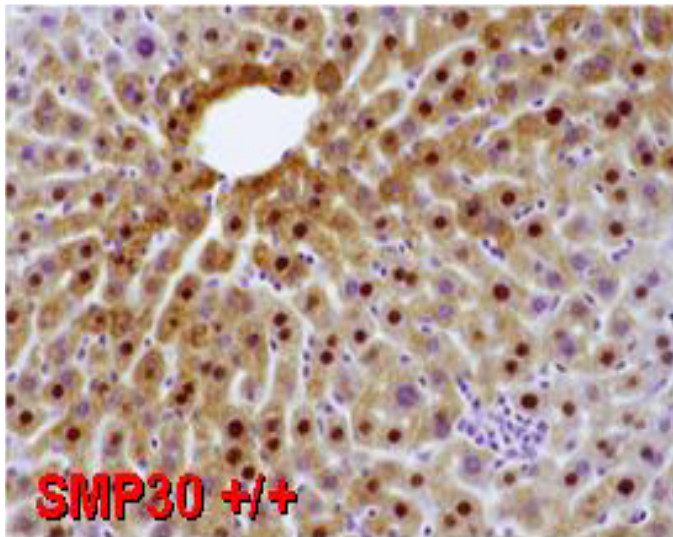
SMP30 (Senescence Marker Protein 30)* IgG Regucalcin* IgG Gluconolactonase(GNL)* IgG Rabbit Polyclonal Antibody (Purified IgG Fraction)

**SMP30, Regucalcin and Gluconolactonase are all same protein.*

Catalog Number : SML-ROI001-EX
Volume : 0.1 mL Concentration of IgG : 0.13 mg/mL
Antigen : Rat SMP30 purified from rat liver, Molecular weight 34 kDa
Host : Rabbit
Supplied As : IgG fraction purified from rabbit serum.
Prepared in 10 mM Tris (pH 7.4), 0.14 M NaCl and 0.05% NaN₃
Storage and Stability: 2-8C, 5 years
Tested applications :

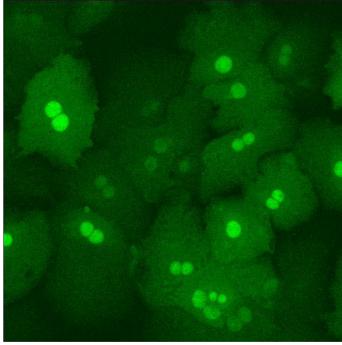
- Immunofluorescence (1:100 1:500 dilution)
- immunohistochemistry (1:100 1:500 dilution)
- Western Blot (1:1,000 1:3,000 dilution)

Cross Reactivity: Cross reacts with Human, Mouse and Rat SMP30.
Not yet tested in other species.



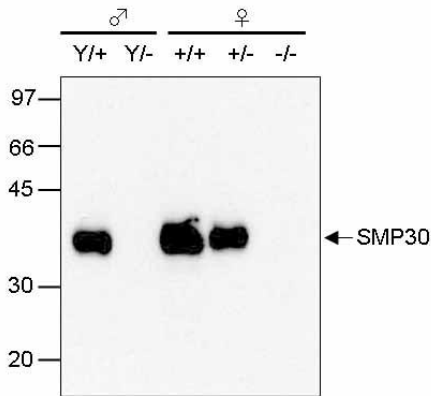
[Immunohistochemical staining]

Mouse liver stained with SMP30 antibody (ROI001) at 1:300 dilution and developed by 3,3' diaminobenzidine. Nucleus and cytoplasm of wild type (SMP30+/+) mice stained, but not stained in liver from SMP30 knockout (SMP30 /-) mice.



[Immunofluorescence staining]

Primary cultured mouse hepatocytes stained with SMP30 antibody (ROI001) at 1:200 dilution. Nucleus and cytoplasm stained in green.



[Western blot analysis]

Each lanes: Mouse liver tissue extract

- Wild type mouse : SMP30Y/+ and SMP30+/+
- SMP30 knockout mice : SMP30Y/ and SMP30 /
- Heterozygous mouse : SMP30+/-

SMP30 antibody (ROI001) at 1:1,000 dilution used.

References :

1. Ishigami, A. et al., Senescence marker protein 30 knockout mouse liver are highly susceptible to TNF α lpha and Fas mediated apoptosis. *Am. J. Pathol.* **161** 1273-1281 (2002)
2. Ishigami, A. et al, Nuclear localization of senescence marker protein 30 (SMP30) in cultured mouse hepatocytes and its homology to RNA polymerase. *Biosci. Biotechnol. Biochem.* **67** 158-160 (2003)
3. Kondo, Y. et al., Senescence Marker Protein 30 Functions as Gluconolactonase in L-Ascorbic Acid Biosynthesis and Its Knockout Mice Are Prone to Scurvy. *Proc. Nat. Acad. Sci. USA* **103** 5723-5728 (2006)

For Research Use Only

