



# TAMRA-FGF1, pin-point labeled

## Pin-point TAMRA-labeled Fibroblast Growth factor, acidic (human)

---

FGF1 (Accession No. P05230), pin-point labeled with TAMRA, was produced in the *E. coli* cell-free translation system in the presence of TAMRA-C6-*p*-aminophenylalanine (TAMRA-aminophenylalanine) amber suppressor tRNA, which is the one of the *CloverDirect*<sup>TM</sup> tRNA reagents for site-directed protein labeling<sup>1)</sup>. Using amber suppression<sup>2)</sup>, TAMRA-aminophenylalanine is site-specifically incorporated at the amber stop codon (UAG) position.

TAMRA-FGF1 has the N-terminal ProX<sup>®</sup> tag, which is the sequence tag optimized for high productivity and high introducing efficiency of TAMRA-aminophenylalanine, and has the C-terminal hexahistidine tag.

The concentration of Pin-point TAMRA-FGF1 was measured by TAMRA fluorescence intensity using with TAMRA dye as a standard. TAMRA-FGF1 was purified by metal chelating-column.

*Additional information;* The identical labeled protein, TAMRA-FGF1, is able to be produced by Pin-point Fluorescence Labeling Kit 543<sup>3)</sup>, using with frame shift suppression (CGGG codon) instead of amber suppression.

- 1) [http://www.proteinexpress.co.jp/j/products/reagent/cloverdirect\\_2.htm](http://www.proteinexpress.co.jp/j/products/reagent/cloverdirect_2.htm)
- 2) Science, 244,182-188 (1989)
- 3) [http://www.proteinexpress.co.jp/j/products/reagent/pin-point\\_kit\\_1.htm](http://www.proteinexpress.co.jp/j/products/reagent/pin-point_kit_1.htm)

**Package;** 1 µg  
( 1 µg/ml solution, 5mM Tris-HCl pH7.4, 150mM NaCl, 20% Glycerol,  
0.1 % (v/w) polyoxyethylene (23) lauryl ether)

**Storage;** -80°C

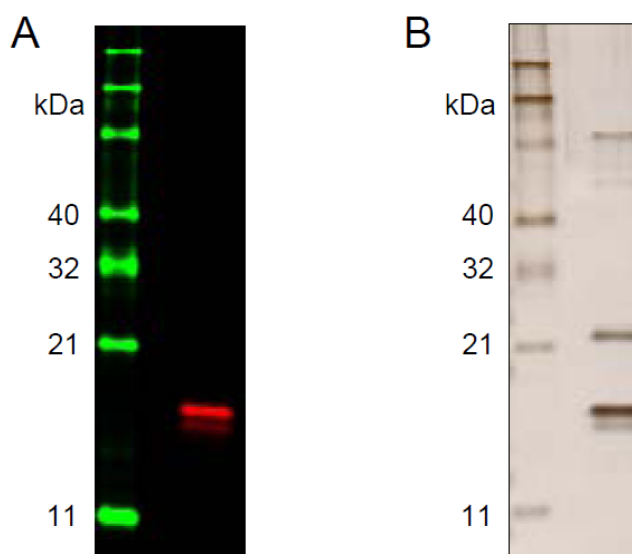
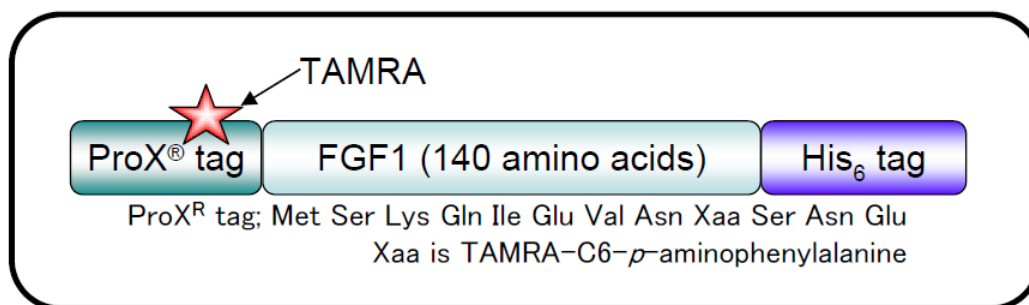
**MW;** 18.8 kDa

**Abs/Em\*:** 546/575 nm

\*Approximate absorption (Abs) and fluorescence emission (Em) maxima of TAMRA dye



COSMO BIO Co., LTD.  
Inspiration for Life Science



**SDS-PAGE analysis of purified TAMRA-FGF1**

A; fluorescence image,

B; silver-stain

For Research Use Only, Not for use in diagnostic procedures



Manufactured by ProteinExpress Co., Ltd. ProteinExpress



COSMO BIO Co., LTD.

Inspiration for Life Science

TOYO 2CHOME, KOTO-KU, TOKYO, 135-0016, JAPAN

URL: <http://www.cosmobio.co.jp>

e-mail: [export@cosmobio.co.jp](mailto:export@cosmobio.co.jp)

[Outside Japan] Phone : +81-3-5632-9617

[国内連絡先] Phone : +81-3-5632-9610

FAX : +81-3-5632-9618

FAX : +81-3-5632-9619