

Anti human ERR alpha mouse monoclonal antibody

ERR alpha: Estrogen-Related Receptor alpha

Code No	PP-H5844-00
Clone No.	H5844
Lot.	***
Concentration	1 mg/mL
Volume	100 uL
Ig Class	G2a
Description	Estrogen-related receptor alpha (ERRa, ERR1, ESRL1; NR3B1) is a member of orphan nuclear receptor. ERRa is expressed in liver, kidney, brain, heart, uterus, vagina and cervix. The protein is expressed with a major 53 kDa in the reproductive tissues. ERRa takes part at the cell cycle and the fatty acid metabolizing of the musculus skeleti. ERRa was shown to interact with ERa.
Nomenclature	NR3B1
Genbank	X51416
Origin	Produced in BALB/c mouse ascites after inoculation with hybridoma of mouse myeloma cells (NS-1) and spleen cells derived from a BALB/c mouse immunized with Baculovirus-expressed recombinant human ERR alpha1 (98-171 aa) .
Specificity	This antibody specifically recognizes human ERR alpha and cross reacts with mouse and rat ERR alpha. This antibody does not recognize human ERR beta and gamma.
Purification	Ammonium sulfate fractionation
Formulation	Physiological saline with 0.1% NaN ₃ as a preservative.

Application / Recommended Concentration

In order to obtain the best results, optimal working dilutions should be determined by each individual user.

Western Blot 1 ug/mL

Non reducing Western Blot 3 ug/mL

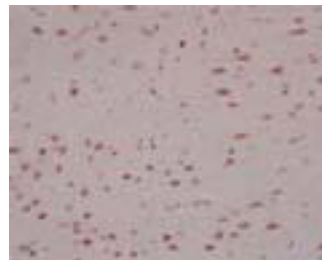
ELISA 0.3 ug/mL

Immunoprecipitation Decide by use

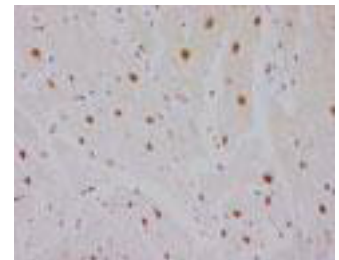
Supershift Assay Not yet tested

Chromatin immunoprecipitation Not yet tested

Immunohistochemistry 1-10 ug/mL



Rat
Cerebrum
paraffin section



Human Heart
Myocardium
paraffin section

Storage

Store at 2 - 8 °C up to one month. For long-term storage, the solution may be frozen in working aliquots. Repeated freezing and thawing is not recommended. Storage in a frost-free freezer is not recommended.

Reference

Suzuki T, et al., Cancer Research, 64(13): 4670-4676, 2004.

Notes

Sodium azide may react with lead and copper plumbing to form explosive metal azides. Flush with large amounts of water during disposal.

FOR RESEARCH ONLY. NOT FOR USE IN HUMANS.

Not for Diagnostic or Therapeutic use. Purchase of this product does not include or carry any right to resell or transfer this product either as a stand-alone product or as a component of another product. Any use of this product other than the permitted use without the express written consent of Perseus Proteomics Inc. is prohibited.

MADE IN JAPAN

Apr 17, 2008



COSMO BIO CO., LTD.
Inspiration for Life Science

Distributor:

Cosmo Bio Co.,Ltd.

2-20,Toyo, 2Chome,Tokyo 135-0016,Japan

TEL: +81-3-5632-9617 FAX: +81-3-5632-9618

<http://www.cosmobio.co.jp>



Manufactured by

Perseus Proteomics Inc.

4-7-6, Komaba, Meguro-ku,

Tokyo 153-0041, Japan

<http://www.ppmx.com>