

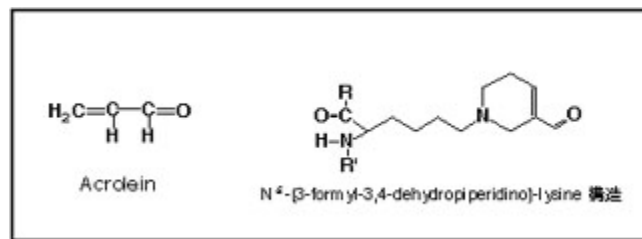


Anti acrolein (ACR)

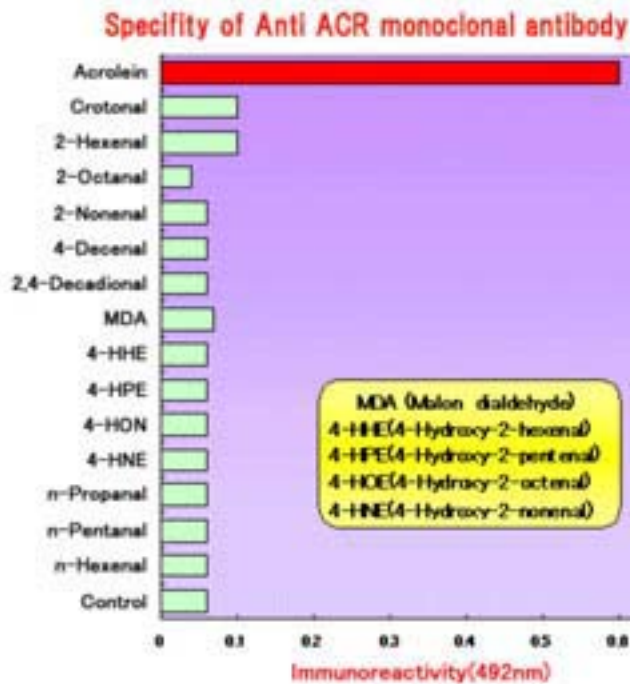
Monoclonal Antibody (5F6)

What's ACR?

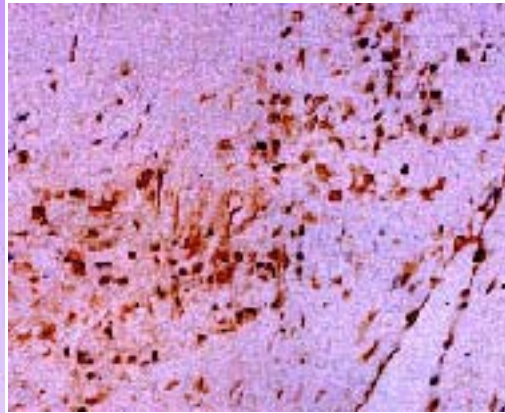
Acrolein (ACR) is a representative carcinogenic aldehyde found ubiquitously in the environment and formed endogenously through oxidation reactions, such as lipid peroxidation and myeloperoxidase-catalyzed amino acid oxidation. ACR is highly reactive aldehyde and reacts with lysine residue in protein. The reaction with ACR and lysine residue leads to the formation of numerous numbers of adducts, such as formyl-dehydropiperidino-lysine (FDP-lysine) type derivative. This antibody is specific for the ACR-modified protein, especially FDP-lysine type derivative.



- Code:** NNS-MAR-020-EX (20 micro gram / vial)
- Source:** Mouse
- Antigen:** ACR-modified keyhole-lympet hemocyanine
- Subclass:** IgG₁(kappa)
- Form:** Frozen (100 micro g/mL antibody in 10mM PBS containing 0.1 %NaN₃ and 0.5% BSA). Purified by Protein-A.
- Specificity:** Specific for ACR-modified protein (especially FDP-lysine type derivative)
- Application:** Immunohistochemistry.
Recommended antibody concentration is 0.5-1.0 micro gram/mL on paraformaldehyde fixed tissue.
- Storage:** Less than -20°C



Immunohistochemical detection of ACR-modified protein in atherosclerotic aorta.



Koji Uchida et al.
Nagoya University

Reference:

- 1) K.Uchida, et. al.
Protein-bound acrolein: Potential markers for oxidative stress.
Proc.Natl.Acad.Sci.USA,95,4882-4887(1998)
- 2) Noel Y, et. al.
Protein-bound acrolein: A novel markers of oxidative stress in Alzheimer's Disease.
Journal of Neurochemistry.72(2),751-756(1999)
- 3) K.Satoh, et. al.
A 1-Hour Enzyme-Linked Immunosorbent Assay for Quantitation of Acrolein- and Hydroxynonenal-Modified Proteins by Epitope-Bound Casein Matrix Method.
Analytical Biochemistry.270,323-328(1999)

Manufacturer



JAPAN INSTITUTE FOR THE CONTROL OF AGING (JaICA)

