

Product Name

Monoclonal Mouse
Anti- bovine type II collagen Immunoglobulin, clone 12F6

CAT No.

MQ4.116-100

Size

100 µg



POSTAL ADDRESS Schoutstraat 58
6525 XV Nijmegen
The Netherlands

TELEPHONE +31 (0) 24 – 361 42 53
MOBILE +31 (0) 6–16 94 04 90
FAX +31 (0) 24 – 350 21 54

E-MAIL sales@modiquestresearch.com
WEBSITE www.modiquestresearch.com

Edition 03.05.2007

Intended use

This product is for research use only. NOT for use in diagnostic or therapeutic procedures.

Mouse monoclonal to bovine and mouse type II collagen, clone 12F6, is intended for use in ELISA.

Reagent provided

The antibody has been lyophilized in a 10 mM ammonium bicarbonate buffer. Each vial contains 2 mg BSA.

Isotype

IgG1

Immunogen

Bovine collagen type II, isolated from the joint.

Specificity

Specificity has been tested in ELISA (figure 1). Additional tests for cross reactivity have not yet been performed.

Purity

Protein A purified.

Precautions

1. For professional users.
2. As with any product derived from biological sources, proper handling procedures should be used.
3. The Product may be used in different techniques and in combination with different sample types and materials, therefore each individual laboratory should validate the test system applied.

Preparation of the antibody

Dissolve the antibody in a 100 mM Tris-HCl pH8.0 buffer, containing 0.05% sodium azide (NaN₃).

Recommended antibody concentration: 0.5 mg/ml. When dissolved at 0.5 mg/ml, the BSA concentration will be 1%.

NOTE: Be careful opening the vial since the antibody resides in a vacuum.

Storage instructions

Dissolve the antibody in and store at 2-8°C.

Dilution guidelines

Optimum working dilutions of the product are not yet determined.

Unless the stability in the actual test system has been established, it is recommended to dilute the product immediately before use.

Relevance

Type II Collagen is the principal collagenous component of cartilage, intervertebral disc and vitreous humour. It is also found in other tissues during development. Its main function is to provide tensile strength and give cartilage the ability to resist shearing forces. Type II Collagen supports chondrocyte

adhesion and may influence the differentiated phenotype of these cells. It can also be used as an *in vivo* model in rats and mice for arthritis studies (injection of Bovine Collagen II induces arthritis).

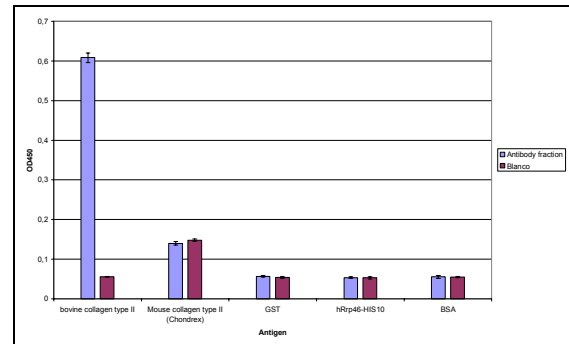


Figure 1: Specificity of anti bovine type II collagen immunoglobulin, clone 12F6, determined by ELISA. Antibody fraction (culture supernatant) 50X diluted in MPBST. Antibody was tested on various recombinant protein substrates i.e. hRrp46-HIS10 (pET16b), GST (pGEX-2T) and BSA, 98% (Sigma).