



Mite-Df Feces AG

Form Lyophilized protein powder
Mite-Df Feces Crude Extract

This product extracted from feed and superficial of House Dust Mites, *Dermatophagoides farinae* (Hughes) *.

*Feed and mite body were stirred with PBS, and centrifuged and the supernatant was dialyzed at 4°C by PBS.

Volume Protein: 5mg

Storage Store below 4°C
(below -40°C for prolonged storage or after dissolved)

Concentration Add distilled water.
It will become phosphate buffered saline [PBS] (Dulbeco), solution.

Note This product is lyophilized product containing totally 5mg proteins per vial.
Therefore, volume of distilled water to reconstitute is different by production lots. For detailed information, visit the website below
https://www.cosmobio.com/products/lsl_lg2334_1.html

Allergic antigen

LG-0009	DNP-Ascaris
LG-0533	DNP-Mite-Df
LG-0544	DNP-Mite-Dp
LG-0528	DNP-Cedar Pollen-Cj
LG-0017	DNP-BSA
LG-3017	DNP-BSA (30)
LG-0024	DNP-OA (Ovalbumin)
LG-0047	DNP-Casein
LG-0067	DNP-LG (BETA-Lactoglobulin)
LG-0089	DNP-KLH
LG-0317	BPO-BSA
LG-0577	BPO-BGG

Adjuvant

LG-6000	ALUM
---------	------

LG-1109	TNP-Ascaris
LG-1117	TNP-BSA
LG-2334	Mite-Df Feces AG
LG-2444	Mite-Dp Feces AG
LG-5009	Ascaris Extract
LG-5339	Mite Extract-Df
LG-5449	Mite Extract-Dp
LG-5559	Mite Extract-Tp
LG-5229	Cedar Pollen Extract
LG-5280	Cedar Pollen Extract-Cj
LG-5779	Hinoki Cypress, Pollen Crude Extract
LG-5889	Ragweed Pollen Extract

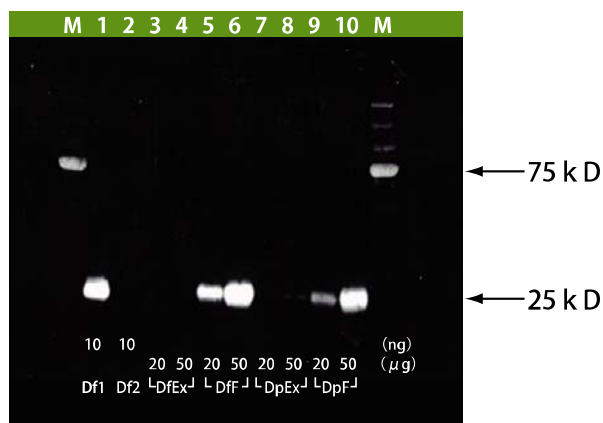


Fig.1, Western blot analysis of Anti (MAP) Mite Group1 (Cat# LSL-LB-8001) and Mite antigen. In both Mite Df and Mite Dp, the amount of the Mite Group1 antigen was higher than that of Mite Extract in Mite Feces AG. The Mite Group1 antigen was also confirmed to Mite Extract by another experiment though it was not clearly detected in this data.

M: MW Marker

Df1: Der f1(product A)

Df2: Der f2(product A)

DfEx: Mite Extract-Df (Cat# LSL-LG-5339)

DDfF: Mite-Df Feces AG (Cat# LSL-LG-2334)

DpEx: Mite Extract-Dp (Cat# LSL-LG5449)

DpF: Mite-Dp Feces AG (Cat# LG2444)

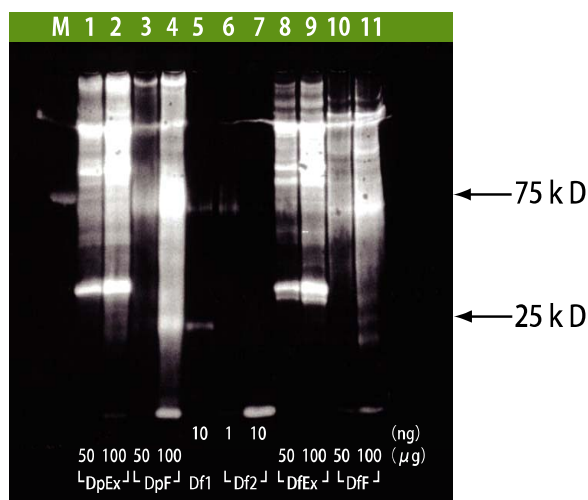


Fig.2, Western blot analysis of Anti Mite Extract Df & Dp (Cat# LSL-LB-5199) and Mite antigen. A different band pattern was confirmed with Mite Extract and Mite Feces AG. The amount of the Mite Group2 antigen was also higher than that of Mite Extract in Mite Feces AG.

M: MW Marker

Df1: Der f1 (product A)

Df2: Der f2 (product A)

DfEx: Mite Extract-Df (Cat# LSL-LG-5339)

DDfF: Mite-Df Feces AG (Cat# LSL-LG-2334)

DpEx: Mite Extract-Dp (Cat# LSL-LG5449)

DpF: Mite-Dp Feces AG (Cat# LG2444)

For research use only. Not for clinical diagnosis.



COSMO BIO Co., LTD.

Inspiration for Life Science

TOYO 2CHOME, KOTO-KU, TOKYO, 135-0016, JAPAN

URL: http://www.cosmobio.co.jp/index_e.asp

e-mail: export@cosmobio.co.jp

[Outside Japan] Phone : +81-3-5632-9617

[国内連絡先] Phone : +81-3-5632-9610

FAX : +81-3-5632-9618

FAX : +81-3-5632-9619

Mite-Df Feces AG

I. 内容

lot No. 181030

性 状	凍結乾燥粉末 (Mite-Df 排泄物由来粗抽出物) House dust mites, <u>Dermatophagoides farinae</u> (Hughes) コナヒョウヒダニ (チリダニ科) の飼料及び虫体表面から 抽出*
規 格	蛋白質量: 5 mg 3.4 ml の精製水を加える事により PBS (Dulbecco, pH7.4) 溶液になります。


* 虫体を含む培地全体を PBS で短時間攪拌、遠心上澄を濃縮後、PBS で透析 (4℃)。

II. 保存上の注意

4℃以下 (長期間又は溶液の場合は -40℃以下) で保存して下さい。

製造元

総発売元

 株式会社 エル・エス・エル コスモ・バイオ株式会社