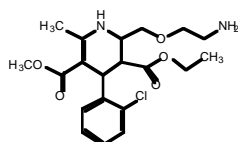




**LKT**  
Laboratories, Inc

[www.lktlabs.com](http://www.lktlabs.com)

## Certificate of Analysis



$C_{20}H_{25}ClN_2O_5$  Mol. Wt.: 408.88 [88150-42-9]

**Product:** Amlodipine

**Catalog No.** A5045

**Lot No.** 23922705

**CAS No.**

### Test Type:

Test	Specification	Results
Appearance	Almost White Crystal Powder	Complies
Color of Solution	In 5% Methanol: clear; White or Light Yellow	Complies Complies
Iron	$\geq 25$ PPM	Complies
Water (K.F.)	$\geq 1.0\%$	0.38%
Heavy Metals	$\geq 25$ PPM	Complies
Related Substance	$\geq 1.5\%$ (HPLC)	Complies
Melting Point	$134^{\circ}\text{C} \sim 136^{\circ}\text{C}$	Complies
Assay (Dried Basis)	$\geq 98.0\%$	99.56%
Solubility	Dissolve in methanol & chloroform	Complies

**Complies: With Factory Standard.**

**This Product Intended For Laboratory and Research Use Only**



コスモ・バイオ株式会社